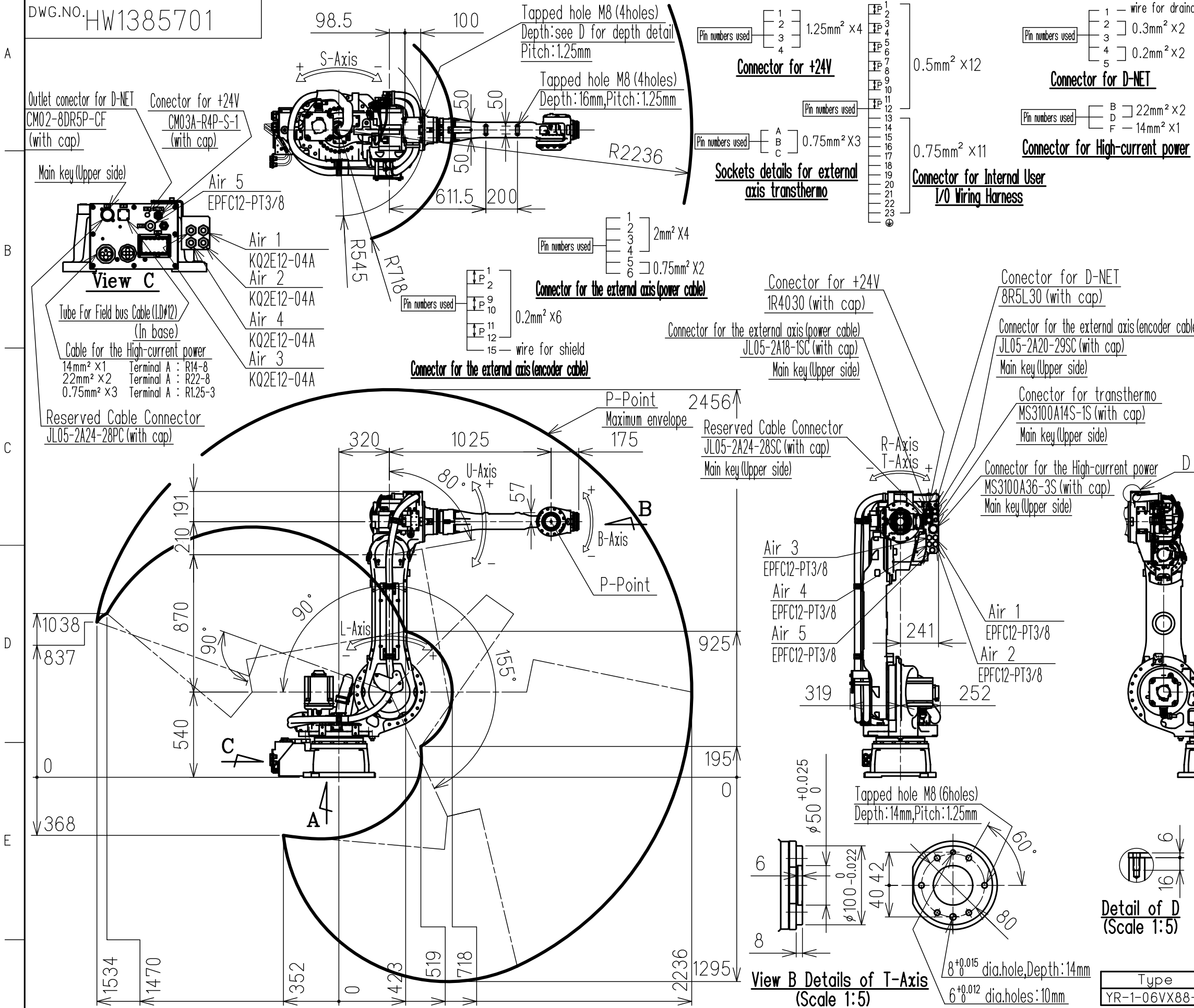


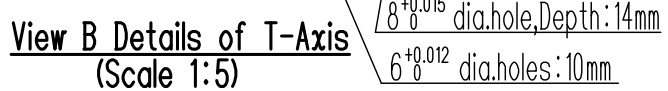
DWG.NO. HW1385701



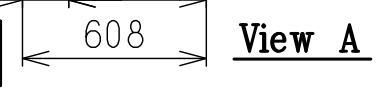
Item	Model	MOTOMAN-GP88
Configuration		Vertically articulated
Degree of Freedom		6
Payload	Wrist	88kg
	On U-arm	10kg
Repeatability (※1)		0.03mm
Range of Motion	S-Axis	-180° - +180°
	L-Axis	-90° - +155°
	U-Axis	-80° - +90°
	R-Axis	-360° - +360°
	B-Axis	-125° - +125°
	T-Axis	-360° - +360°
Max Speed	S-Axis	2.97 rad/s, 170°/s
	L-Axis	2.44 rad/s, 140°/s
	U-Axis	2.79 rad/s, 160°/s
	R-Axis	4.01 rad/s, 230°/s
	B-Axis	4.01 rad/s, 230°/s
	T-Axis	6.11 rad/s, 350°/s
Allowable Moment	R-Axis	408N·m (42kgf·m)
	B-Axis	408N·m (42kgf·m)
	T-Axis	206N·m (21kgf·m)
Allowable Inertia (GD²/4)	R-Axis	30kg·m²
	B-Axis	30kg·m²
	T-Axis	11kg·m²
Approx. Robot mass		630kg
Protected structure		Body: IP54 Wrist: IP67
Mounting method	Temperature	0°C to +45°C
	Humidity	20%RH to 80%RH (Non-condensing)
Ambient Conditions	Vibration	4.9m/s² (0.5G) or less
	Altitude	1000m or less
	Flatness for installation	0.5mm or less
Others	Flatness for installation	0.5mm or less
	Others	•Free from dirt, dust, oil, soot, or water. •Free from explosive and corrosive gas or liquid. •Free from excessive electrical noise (plasma). •Free from strong magnetic fields.
Power Requirements		4.0kVA
Controller		YRC1000

※1 Repeatability is conformed to ISO 9283.
 ※2 The manipulator is in the home position.

Unit: mm

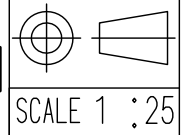


Type	Note
YR-1-06VX88-A00	Standard



Note:
 1. All rights reserved.
 2. Please note that the data is subject to be deleted without advance notice.
 3. No warranty is given in relation to the data including the specification.
 4. We are not responsible for any damages or loss caused by the use of the data.

FOR STUDY PURPOSE ONLY



YASKAWA
 株式会社 安川電機

Reference Drawing

TITLE MOTOMAN-GP88
 DIMENSION DIAGRAM

DRWN DATE Oct. 2, '17
 DWG.NO. HW1385701

SIZE A3