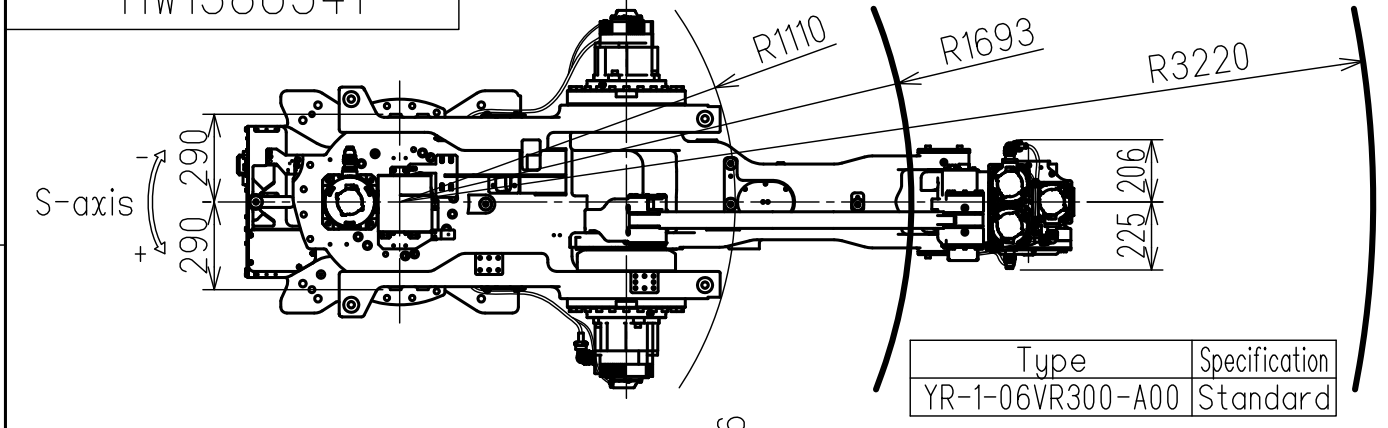
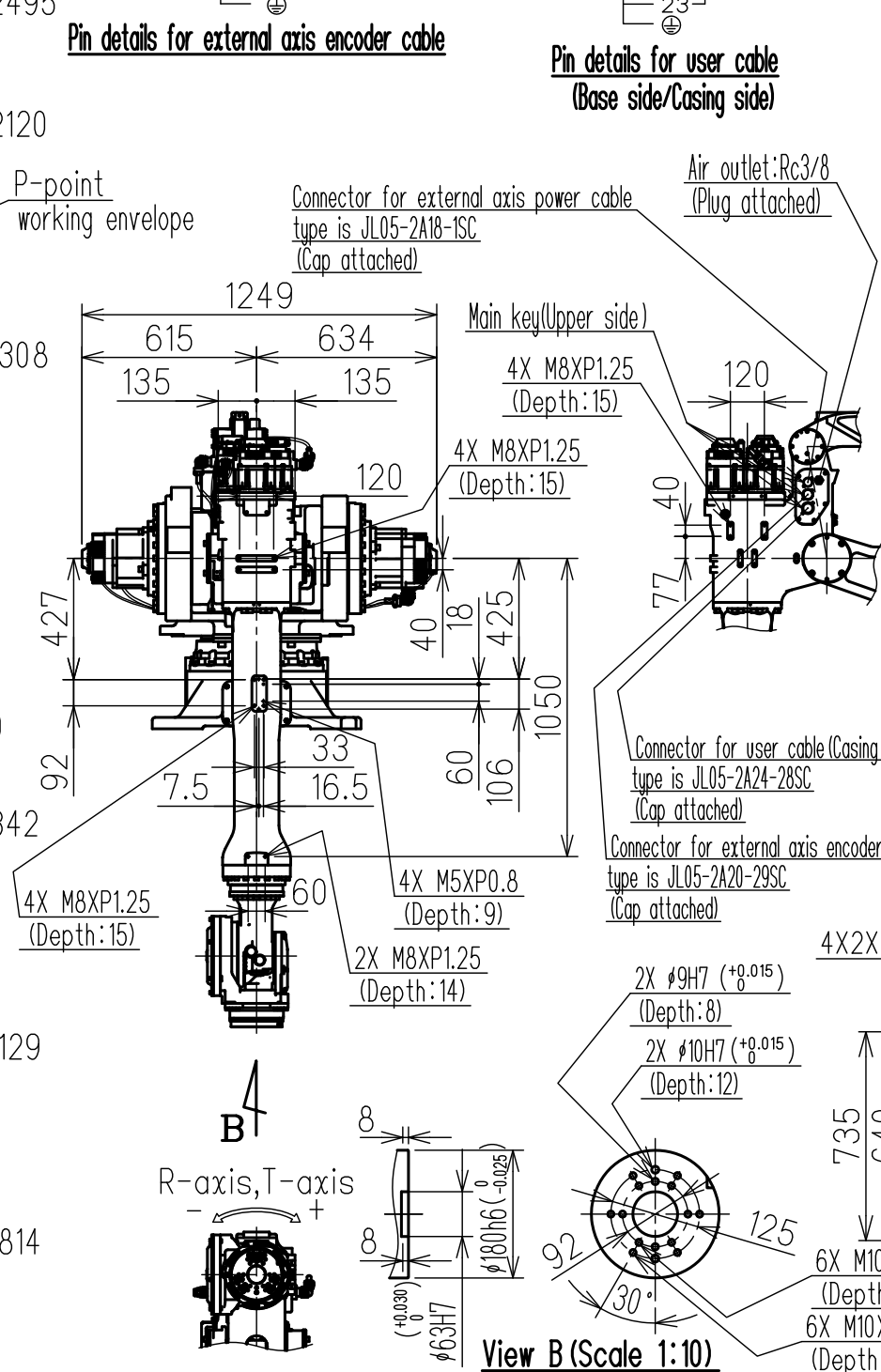
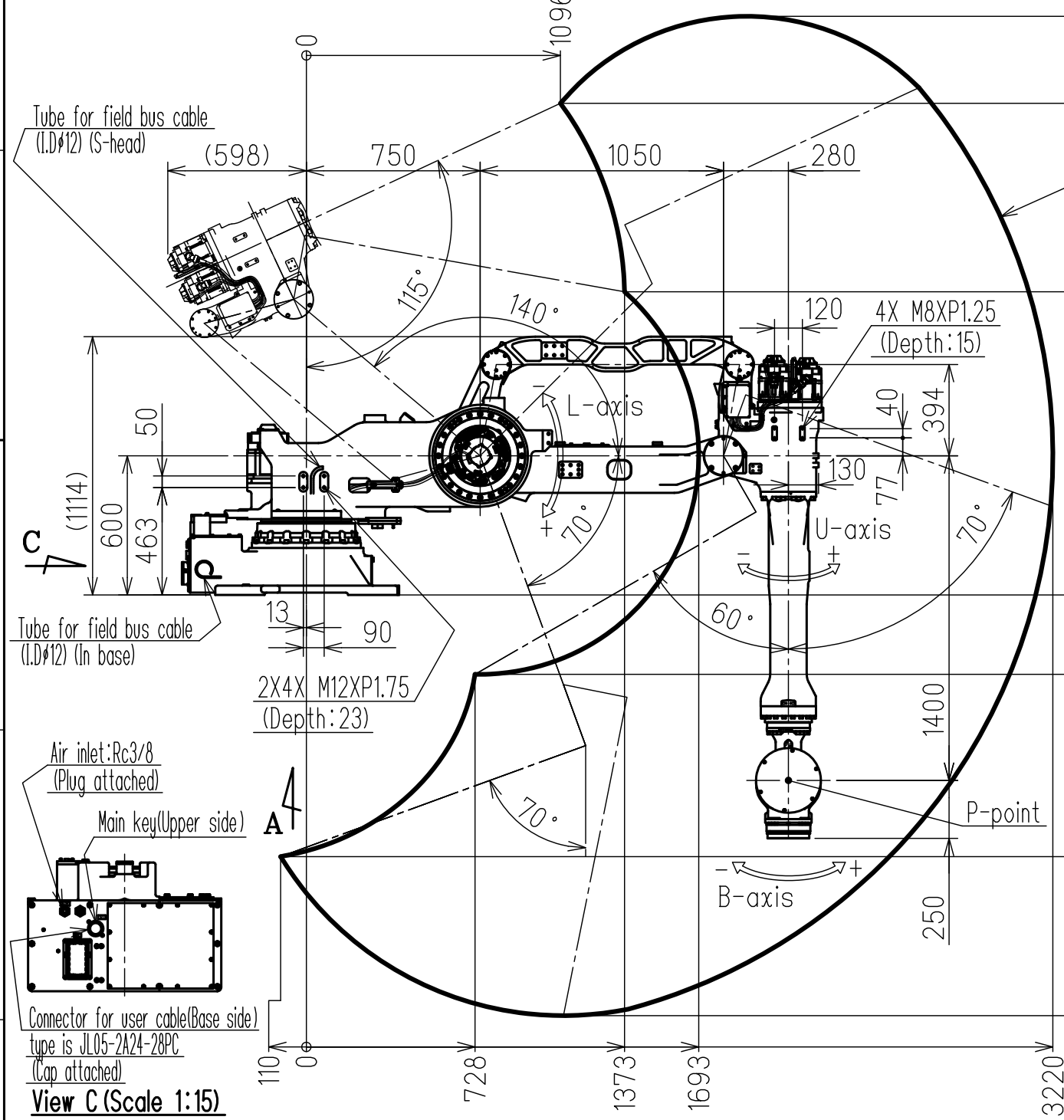
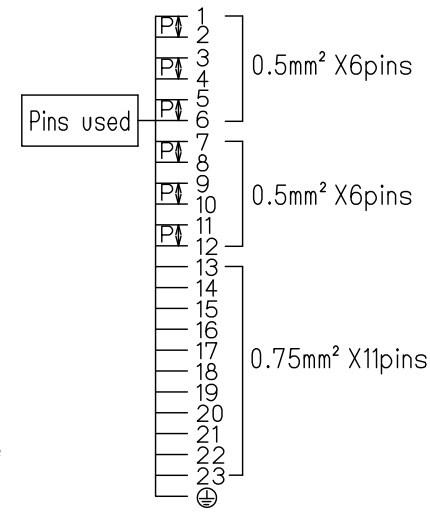
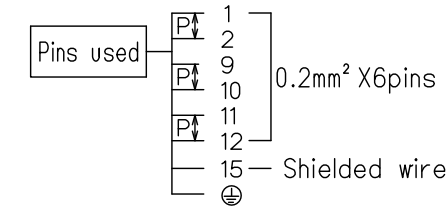
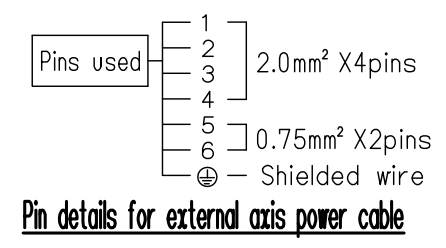


DWG.NO. HW1386541



Type	Specification
YR-1-06VR300-A00	Standard

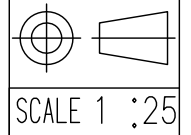


Item	Model	MOTOMAN-GP300R
Configuration		Vertically articulated
Degree of freedom		6
Payload	wrist	300kg
	On u-arm	30kg
Repeatability (*1)		0.05 mm
Range of motion	S-axis (Turning)	-180° - +180°
	L-axis (Lower arm)	-140° - +70°
	U-axis (Upper arm)	-70° - +115°
	R-axis (Roll)	-360° - +360°
	B-axis (Pitch/Yaw)	-125° - +125°
Maximum speed	T-axis (Twist)	-360° - +360°
	S-axis	1.92 rad/s, 110°/s
	L-axis	1.66 rad/s, 95°/s
	U-axis	1.66 rad/s, 95°/s
	R-axis	2.09 rad/s, 120°/s
Allowable moment	B-axis	2.09 rad/s, 120°/s
	T-axis	3.32 rad/s, 190°/s
	R-axis	1962 N·m (200kgf·m)
Allowable inertia (GD ² /4)	B-axis	1962 N·m (200kgf·m)
	T-axis	834 N·m (85kgf·m)
	R-axis	320 kg·m ²
Mass	B-axis	320 kg·m ²
	T-axis	200 kg·m ²
	R-axis	1530kg
Protection rating		Body:IP54 Wrist:IP67
Mounting method		Shelf-mounted
Ambient conditions	Temperature	0°C - +45°C
	Humidity	20%RH - 80%RH (No-condensing)
	Vibration acceleration	4.9m/s ² (0.5G) or less
	Altitude	1000m or less
	Flatness for installation	0.5mm or less
	Others	Free from dirt, dust, oil soot, or water Free from explosive and corrosive gas or liquid Free from excessive electrical noise (plasma) Free from strong magnetic field
Power requirements		5.0KVA
Applicable controller		YRC1000

*1 Repeatability conforms to ISO 9283.
*2 The manipulator is in the home position in this drawing.
Units:mm

Note:
1 All rights reserved.
2 Please note that the data is subject to be deleted without advance notice.
3 The warranty is given in relation to the data including the specification.
4 We are not responsible for any damages or loss caused by the use of the data.

FOR STUDY PURPOSE ONLY



YASKAWA
株式会社安川電機

Reference Drawing

TITLE MOTOMAN-GP300R
DIMENSION DIAGRAM

DRWN DATE Jan.20.'20
DWG.NO. HW1386541

SIZE A3