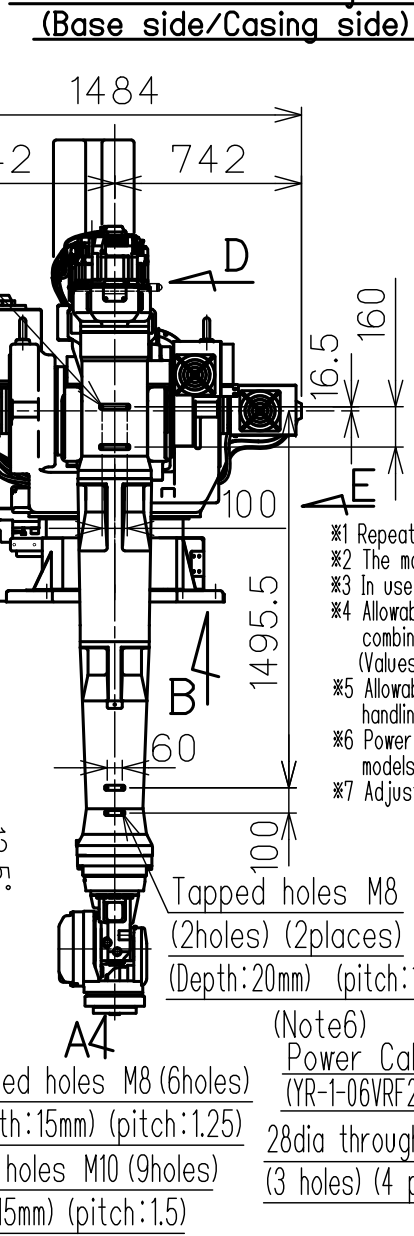
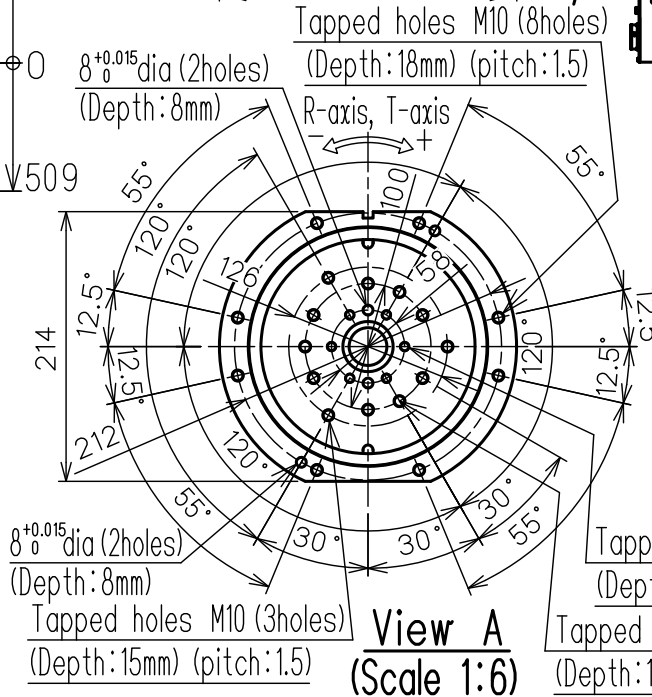
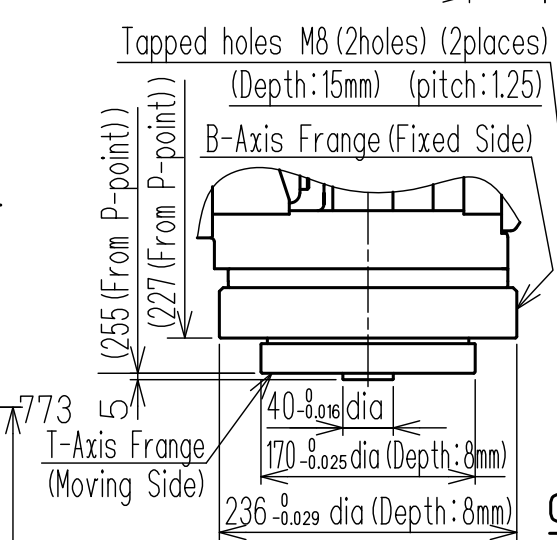
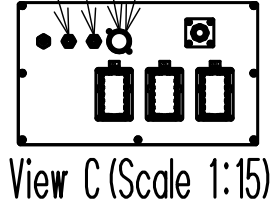
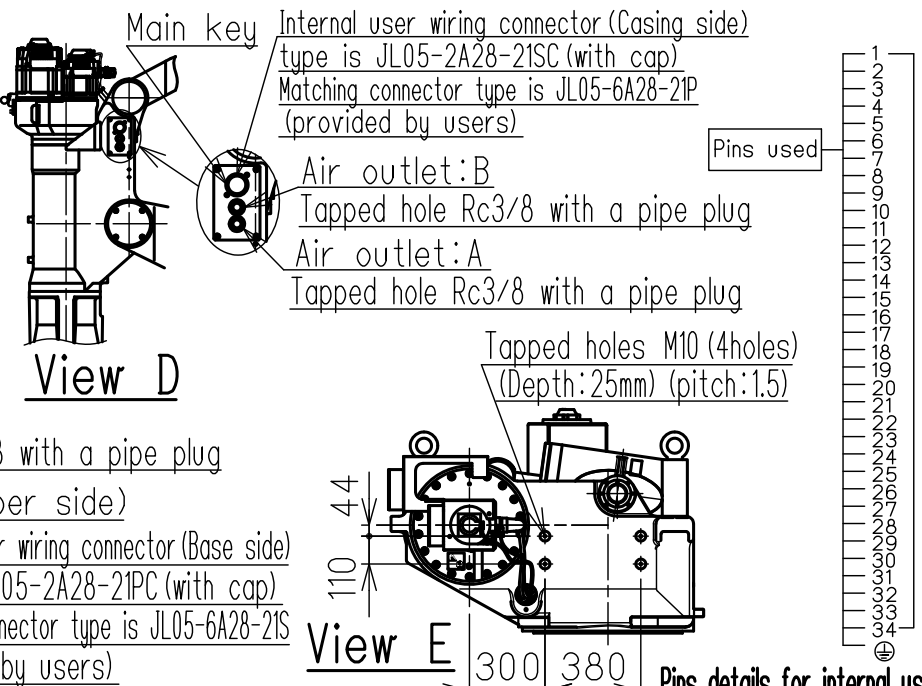
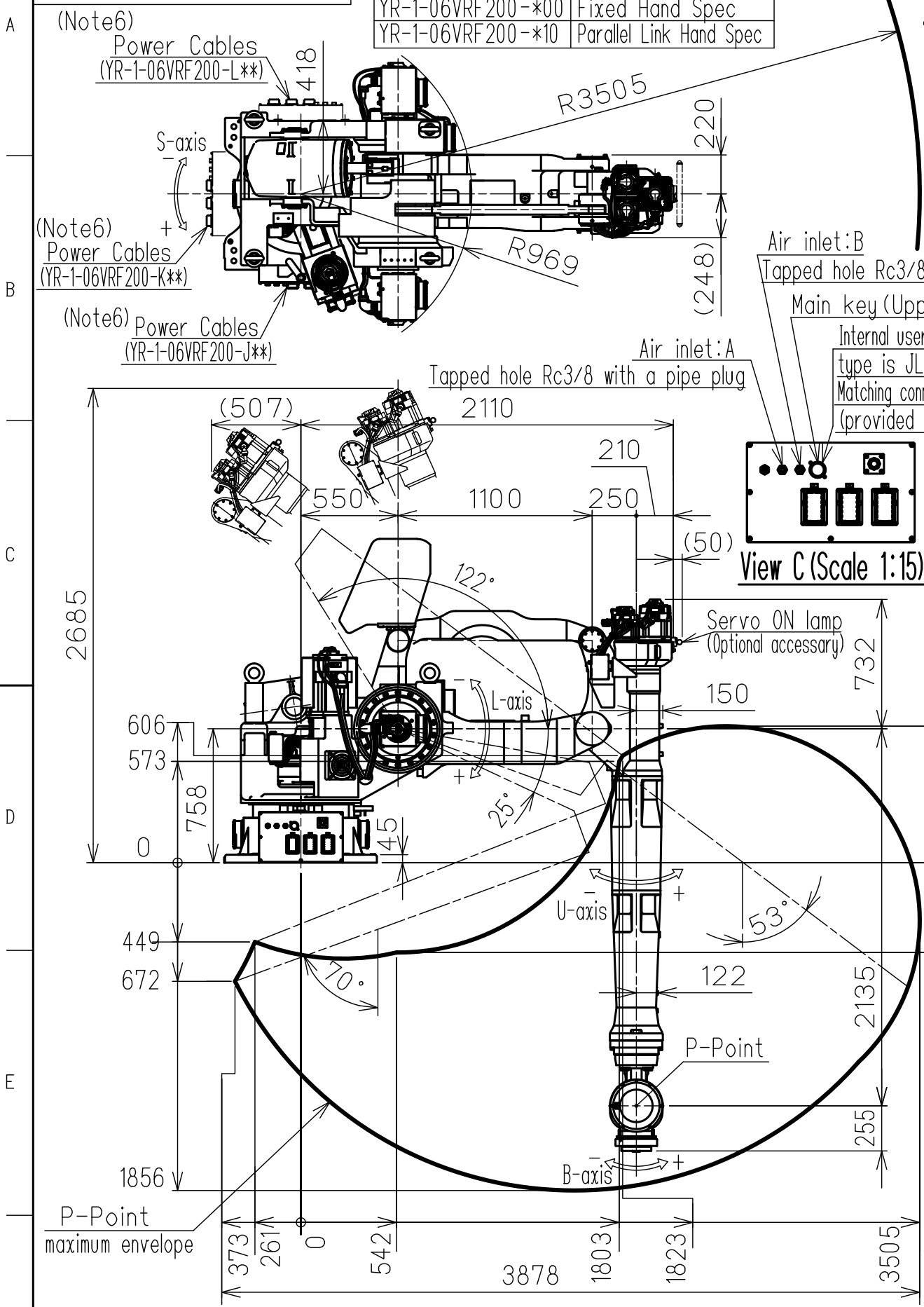


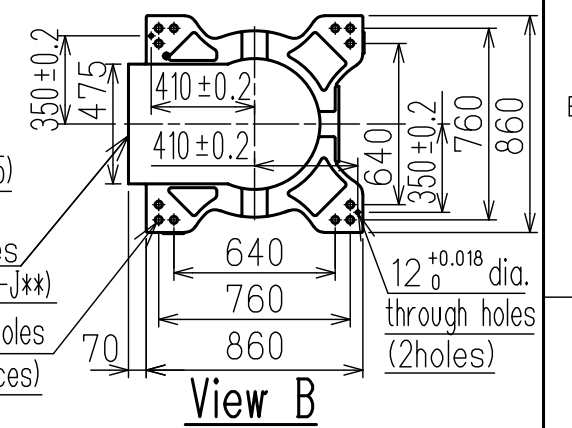
DWG.NO. HW1385440

Type	Note
YR-1-06VRF200-*00	Fixed Hand Spec
YR-1-06VRF200-*10	Parallel Link Hand Spec



Item	Model	MOTOMAN-PH200RF
Configuration		Vertically articulated
Degree of Freedom		6
Payload	Wrist	200 kg (※3)
	On U-arm	10 kg
Repeatability (※1)		±0.5 mm
Range of Motion	S-Axis (Turning)	-150° - +150°
	L-Axis (Lower Arm)	-122° - +25°
	U-Axis (Upper Arm)	-70° - +53°
	R-Axis (Roll)	-360° - +360°
	B-Axis (Pitch/Yaw)	-120° - +120° (※3)
	T-Axis (Twist)	-360° - +360° (※3)
Max Speed	S-Axis	1.57 rad/s, 90°/s
	L-Axis	1.57 rad/s, 90°/s
	U-Axis	1.57 rad/s, 90°/s
	R-Axis	1.40 rad/s, 80°/s
	B-Axis	1.40 rad/s, 80°/s
	T-Axis	2.79 rad/s, 160°/s
Allowable Moment	R-Axis	1274 N·m (130 kgf·m)
	B-Axis	2156 N·m (220 kgf·m)
	T-Axis	0 N·m (0 kgf·m)
Allowable Inertia (GD ² /4)	R-Axis	84.5 kg·m ²
	B-Axis	330 kg·m ²
	T-Axis	80 kg·m ²
Approx. Robot mass		2940 kg
Protected structure		Body: -, Wrist: IP67
Mounting method		Shelf-mounted
Allowable Conditions	Temperature	0 to +45°C
	Humidity	20 to 80%RH (Non-condensing)
	Vibration	9.8m/s ² (1.0G) or less
	Altitude	1000m or less
	Others	<ul style="list-style-type: none"> Free from explosive or corrosive gas and liquid. Free from dust, soot, oil, or water. Free from electrical noise. Free from strong magnetic fields.
Power Requirements		22KVA
Controller		YRC1000

- Units: mm
- ※1 Repeatability is conformed to ISO 9283.
 - ※2 The manipulator is in the home position.
 - ※3 In use of parallel link hand, please contact your Yaskawa representative.
 - ※4 Allowable moment/inertia are the acceptable values at the time of combining with a parallel link hand or a fixed hand. (Values include the weights of parallel link hand and the workpiece)
 - ※5 Allowable wrist load is based on an assumption that the robot is handling a workpiece horizontally by keeping its wrist flange downwards.
 - ※6 Power cable will be located on different positions depending on models (J**, K**, L**).
 - ※7 Adjustable S axis mechanical stoppers are the standard equipment.



Note:
 1. All rights reserved.
 2. Please note that the data is subject to be deleted without advance notice.
 3. No warranty is given in relation to the data including the specification.
 4. We are not responsible for any damages or loss caused by the use of the data.

FOR STUDY PURPOSE ONLY

SCALE 1:30



Reference Drawing

TITLE MOTOMAN-PH200RF
 DIMENSION DIAGRAM

DRWN DATE Nov.02.'17
 DWG.NO. HW1385440

SIZE A3