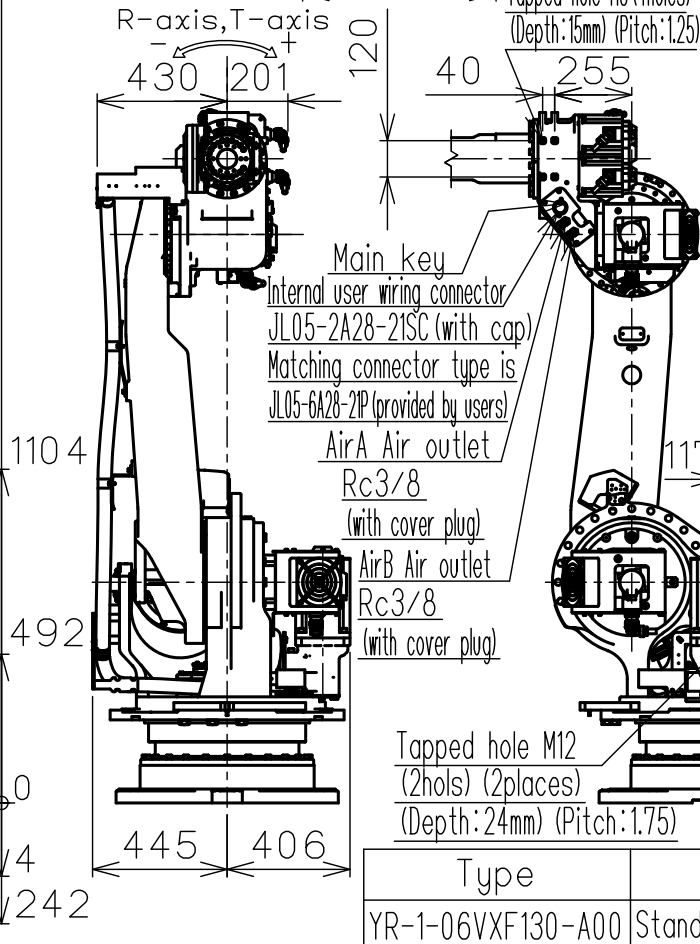
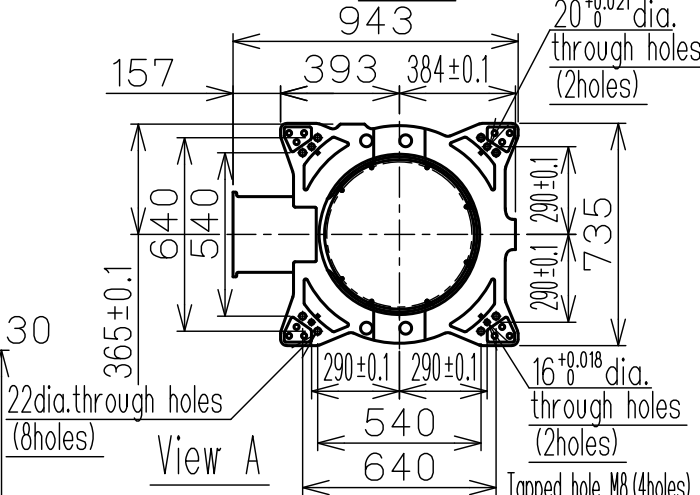
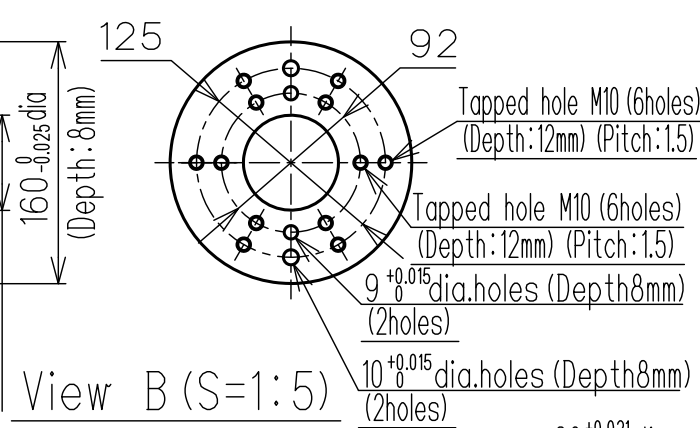
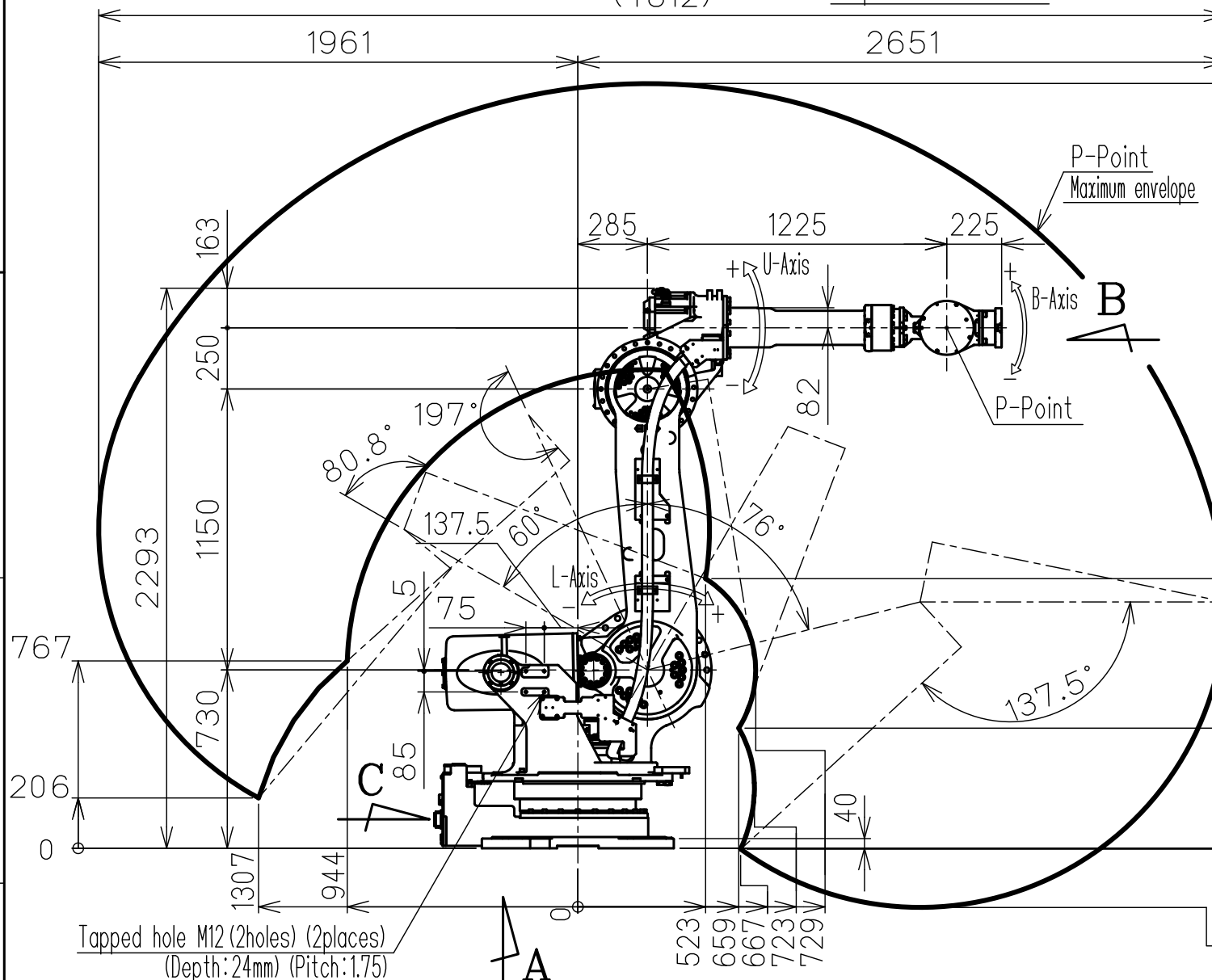
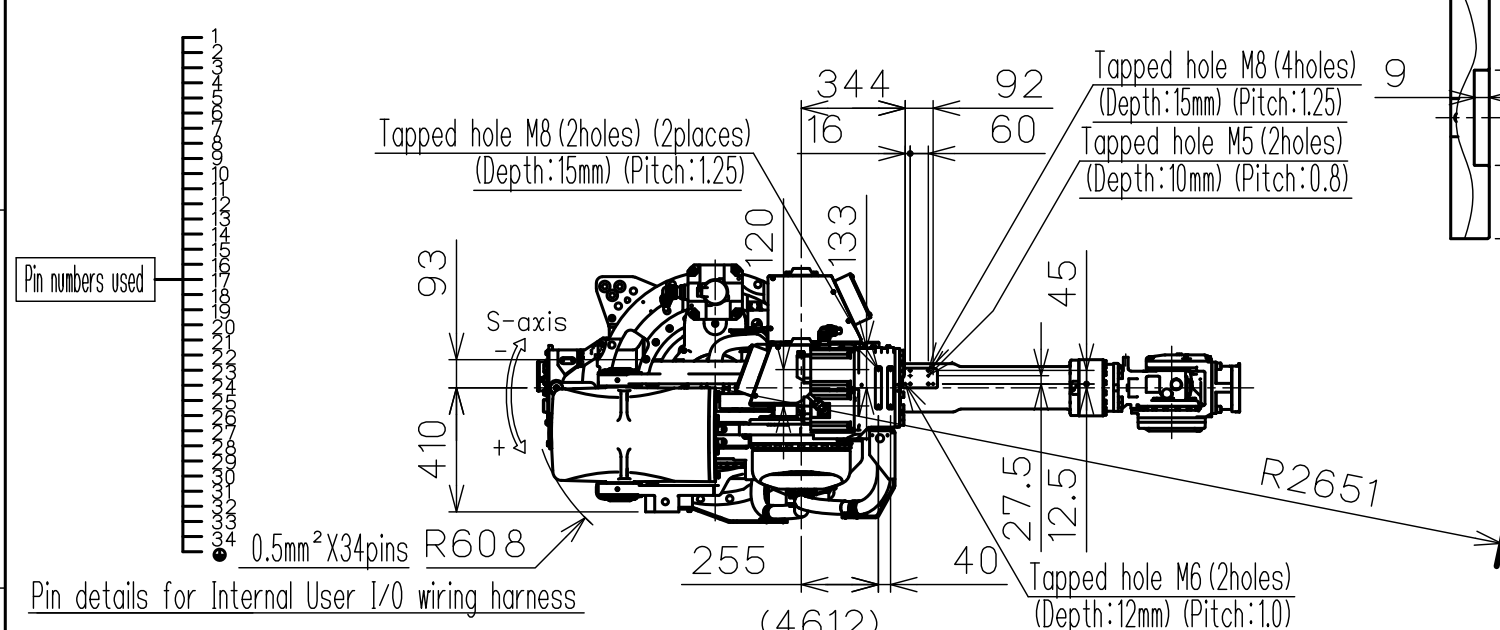


DWG.NO. HW1385856



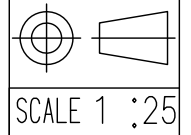
Item	Model	MOTOMAN-PH130F
Configuration	Vertically articulated	
Degree of Freedom	6	
Payload	Wrist	130kg
	On U-arm	30kg
Repeatability (*1)	\pm 0.2 mm	
Range of Motion	S-Axis	-180° - +180°
	L-Axis	-60° - +76°
	U-Axis	-80.8° - +197°
	R-Axis	-360° - +360°
	B-Axis	-130° - +130°
	T-Axis	-360° - +360°
Max Speed	S-Axis	2.27 rad/s, 130°/s
	L-Axis	2.27 rad/s, 130°/s
	U-Axis	2.27 rad/s, 130°/s
	R-Axis	3.75 rad/s, 215°/s
	B-Axis	3.14 rad/s, 180°/s
	T-Axis	5.23 rad/s, 300°/s
Allowable Moment	R-Axis	735N·m (75kgf·m)
	B-Axis	735N·m (75kgf·m)
	T-Axis	421N·m (43kgf·m)
Allowable Inertia (GD ² /4)	R-Axis	45kg·m ²
	B-Axis	45kg·m ²
	T-Axis	15kg·m ²
Approx. Robot mass	1500kg	
Protected structure	Body: IP54 Wrist: IP67	
Mounting method	Floor-mounted	
Ambient Conditions	Temperature	0 to +45°C
	Humidity	20-80%RH (Non-condensing)
	Vibration	9.8m/s ² (1.0G) or less
	Altitude	1000m or less
	Others	<ul style="list-style-type: none"> Free from explosive or corrosive gas and liquid. Free from dust, soot, oil, or water. Free from electrical noise. Free from strong magnetic fields.
Power Requirements	7.5kVA	
Controller	YRC1000	

*1 Repeatability is conformed to ISO 9283.
 *2 The manipulator is in the home position.
 Unit : mm

Type	Note
YR-1-06VXF130-A00	Standard Specifications

Note:
 1. All rights reserved.
 2. Please note that the data is subject to be deleted without advance notice.
 3. No warranty is given in relation to the data including the specification.
 4. We are not responsible for any damages or loss caused by the use of the data.

FOR STUDY PURPOSE ONLY



YASKAWA
 株式会社 安川電機

Reference Drawing

TITLE MOTOMAN-PH130F
 DIMENSION DIAGRAM

DRWN DATE '18.01.22
 DWG.NO. HW1385856

SIZE A3