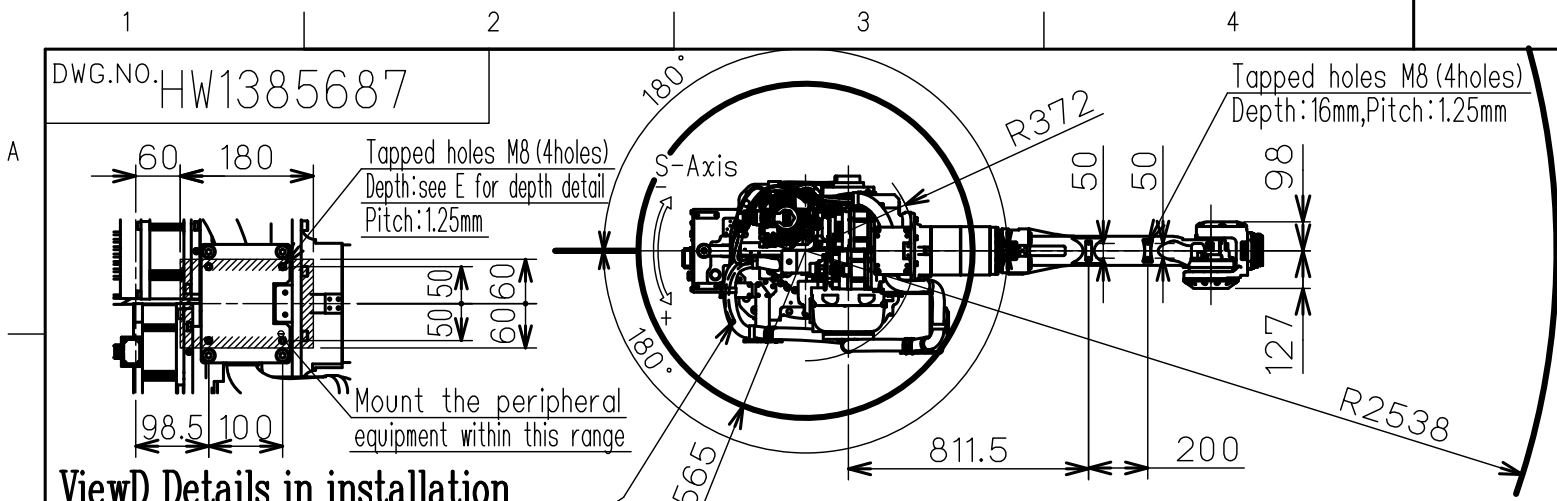
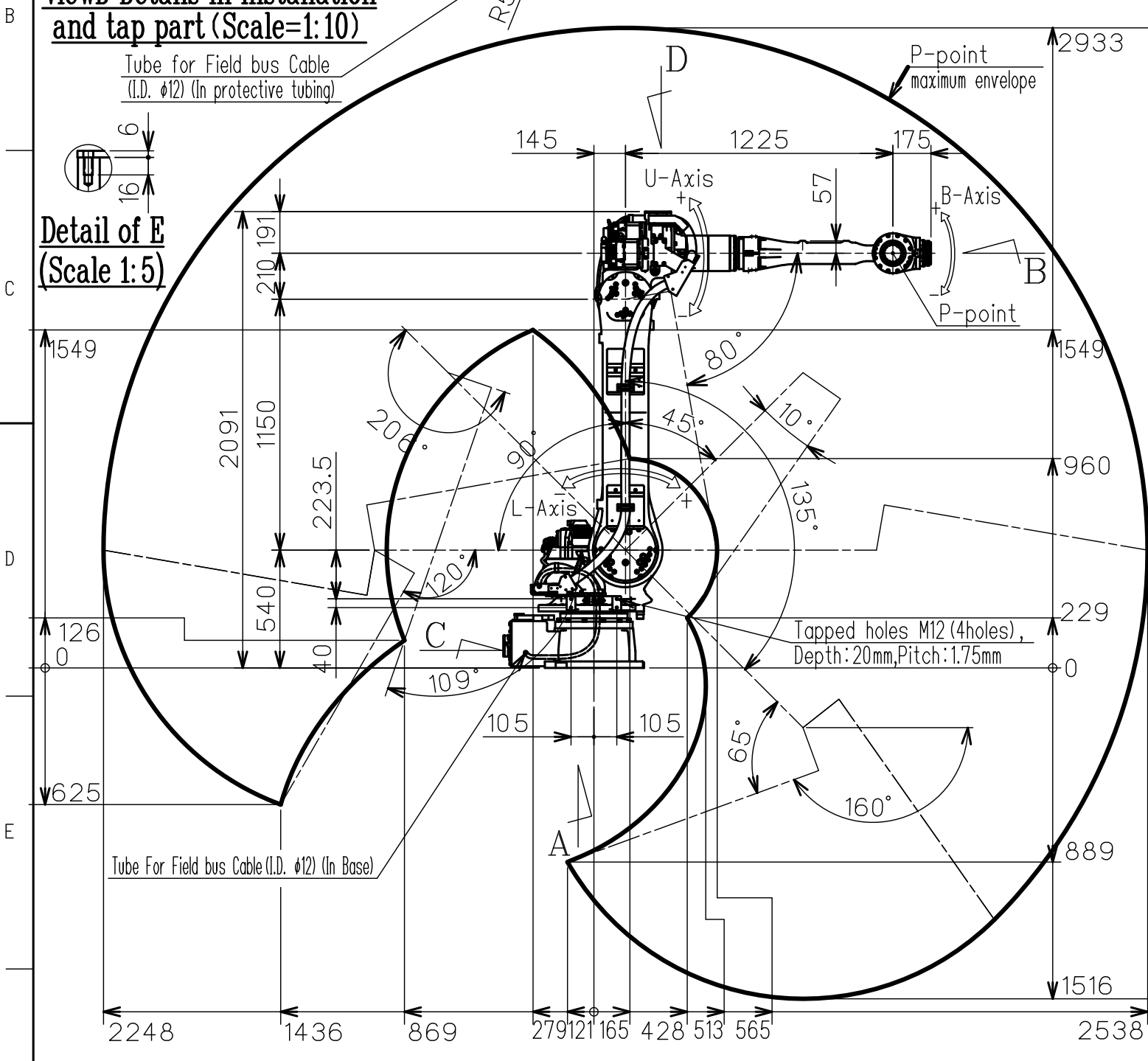


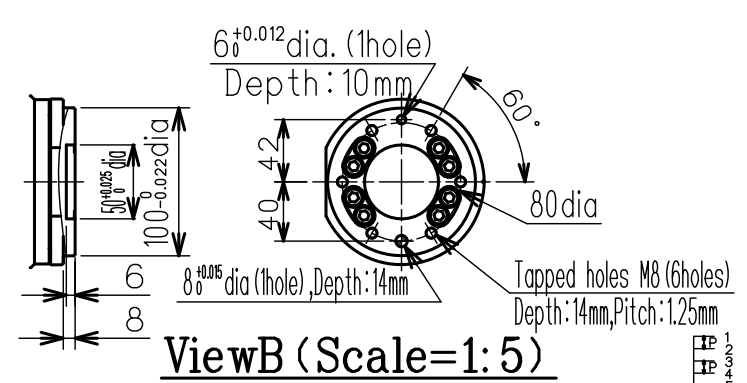
DWG.NO. HW1385687



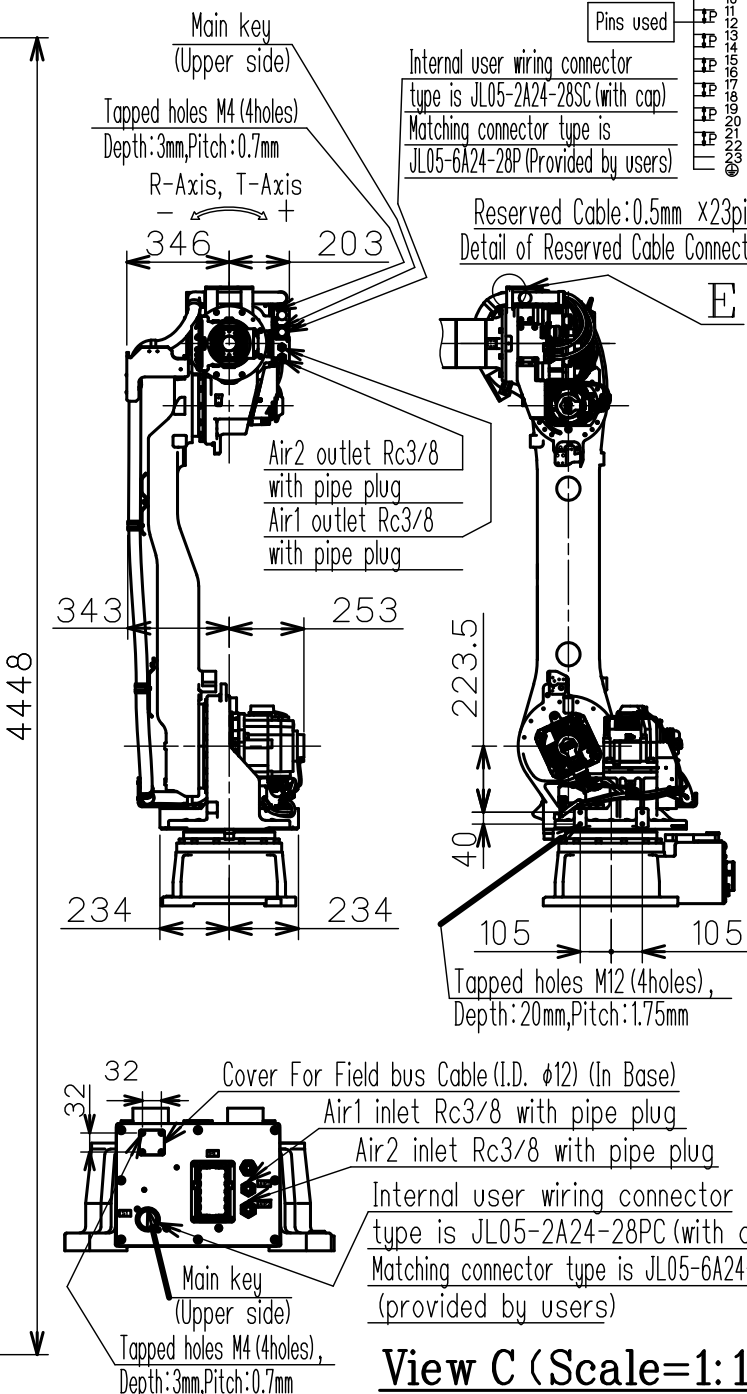
View D Details in installation and tap part (Scale=1:10)



Detail of E (Scale 1:5)



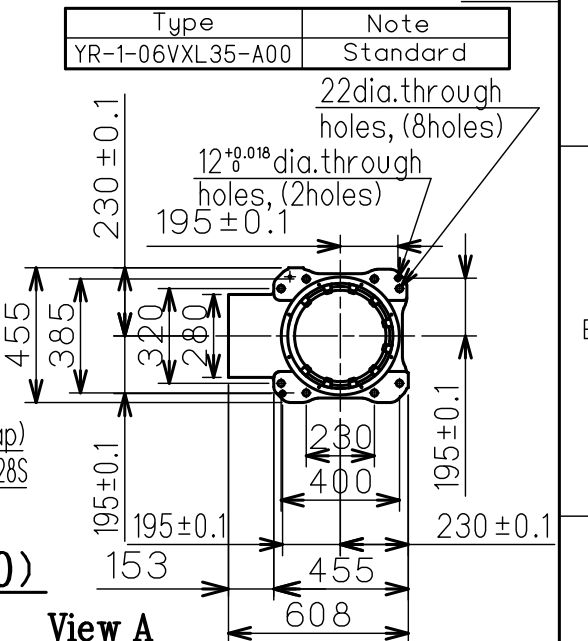
View B (Scale=1:5)



View C (Scale=1:10)

Item	Model	MOTOMAN-GP35L
Configuration		Articulated Robot
Degree of Freedom		6
Payload	Wrist	35 kg
	On U-arm	10 kg
Repeatability (※1)		±0.07mm
Range of Motion	S-Axis (※2)	-180° - +180°
	L-Axis	-90° - +135°
	U-Axis	-80° - +206°
	R-Axis	-360° - +360°
	B-Axis	-125° - +125°
Max Speed	S-Axis	3.14rad/s, 180°/s
	L-Axis	2.44rad/s, 140°/s
	U-Axis	3.11rad/s, 178°/s
	R-Axis	4.36rad/s, 250°/s
Allowable Moment	B-Axis	4.36rad/s, 250°/s
	T-Axis	6.28rad/s, 360°/s
	R-Axis	14.7N·m (15kgf·m)
Allowable Inertia (GD ² /4)	B-Axis	14.7N·m (15kgf·m)
	T-Axis	7.8N·m (8kgf·m)
	R-Axis	10kg·m ²
Approx. Robot mass		600kg
Protected structure		Body: IP54 Wrist: IP67
Mounting method (※2)		Floor-mounted, Wall-mounted, Tilt-mounted, Ceiling-mounted
Ambient Conditions	Temperature	0 to +45°C
	Humidity	20 to 80%RH (Non-condensing)
	Vibration	Less than 4.9m/s ² (0.5G)
	Altitude	1000m or less
	Others	Free from explosive or corrosive gas and liquid. Free from dust, oil or water. Free from electrical noise. Free from strong magnetic fields.
Power Requirements		4.5KVA
Controller		YRC1000

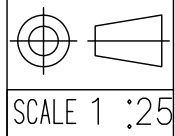
※1 Repeatability is conformed to ISO 9283.
 ※2 When the manipulator is installed on a slope or a wall, the motion of S-axis will be limited.
 ※3 The manipulator is in the home position.
 Units: mm



View A

注記
 1.本データの変更、転載を禁止いたします。
 2.本データは、予告なしに、削除する場合がございます。
 3.本データは仕様を保障するものではありません。
 4.本データの使用によっては発生した一切の損害についての責任は負いかねます。

営業用資料



YASKAWA
 株式会社 安川電機

参考図

TITLE MOTOMAN-GP35L
 DIMENSION DIAGRAM

DRWN DATE May. 10. '17
 DWG.NO. HW1385687

SIZE A3