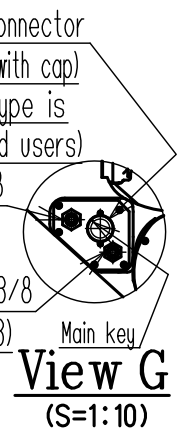
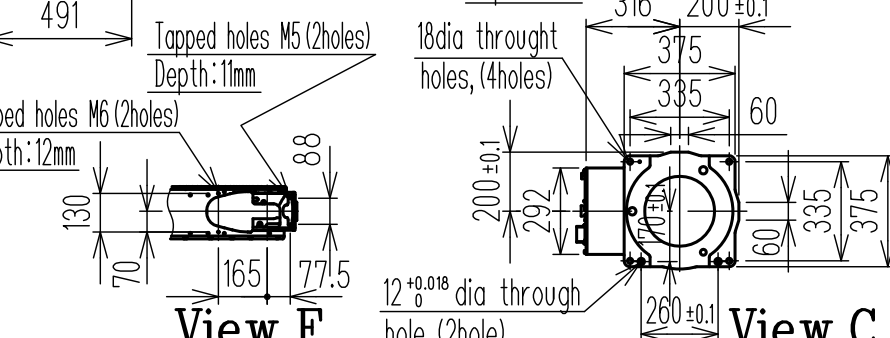
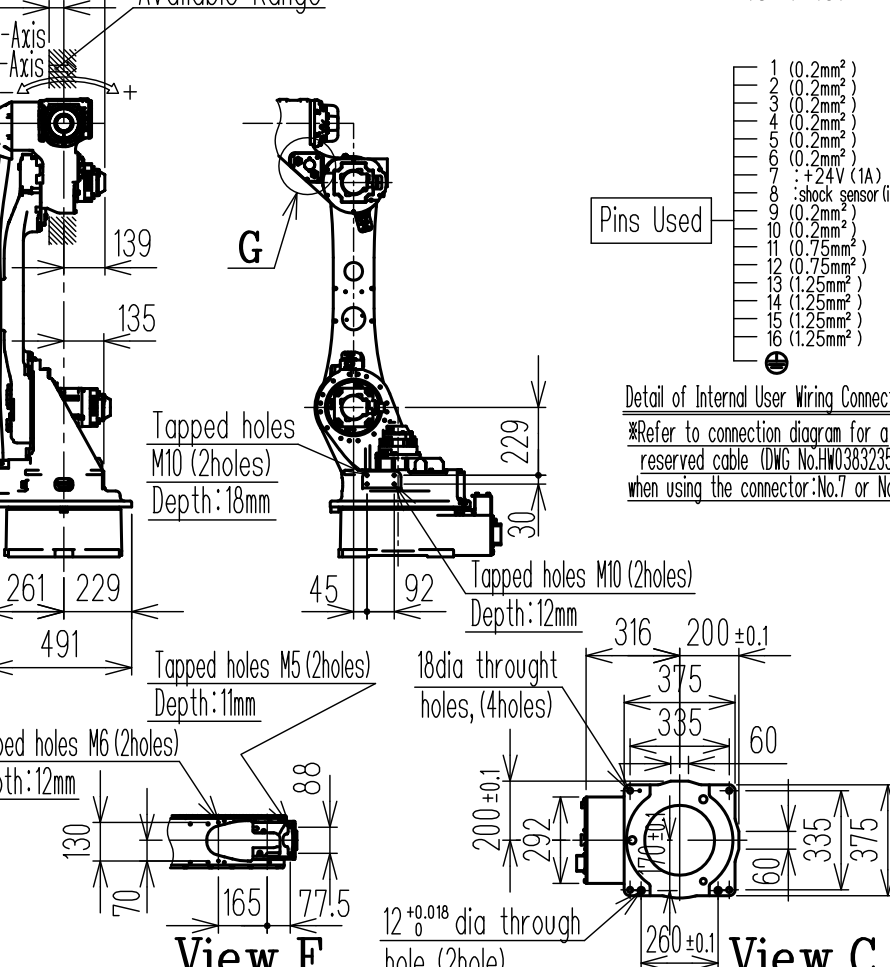
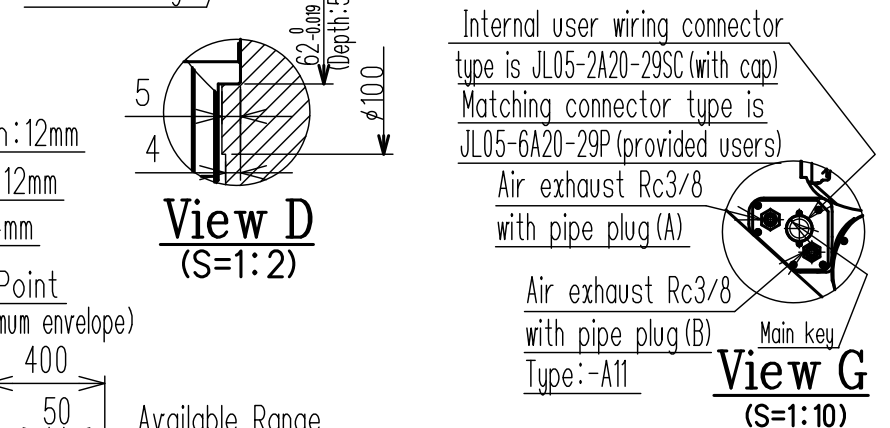
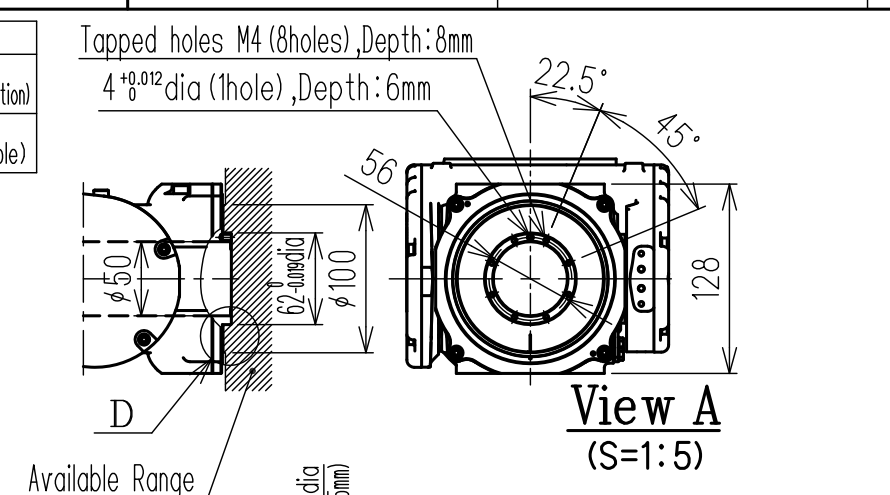
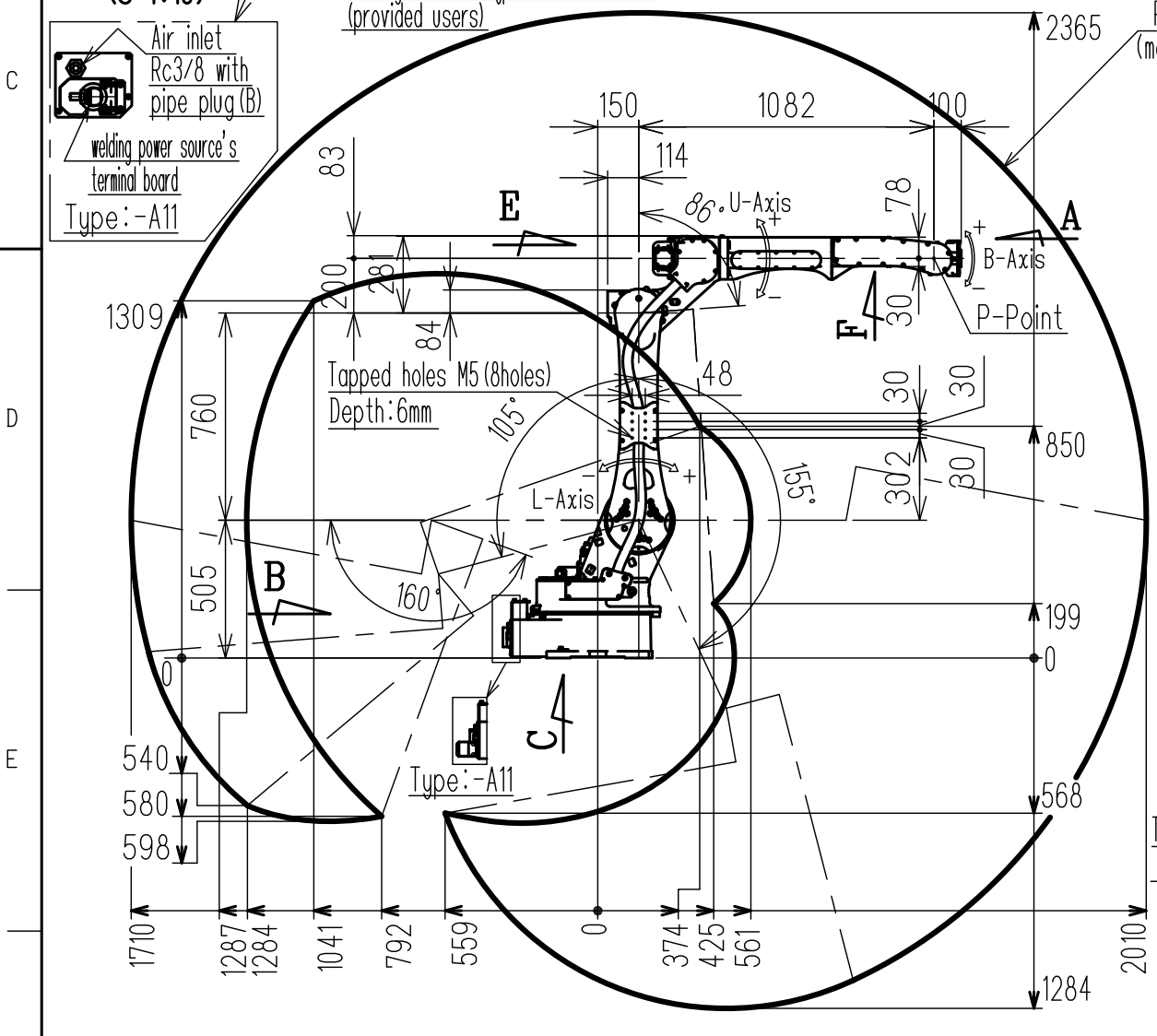
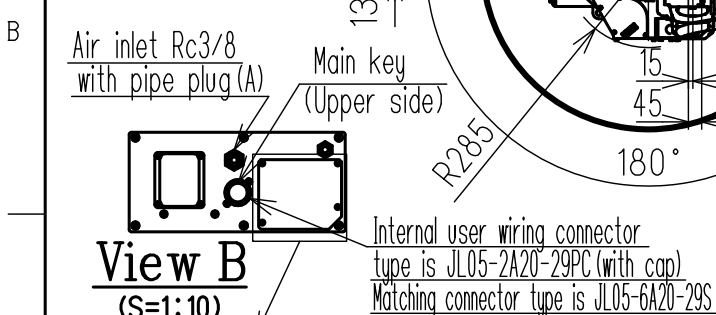
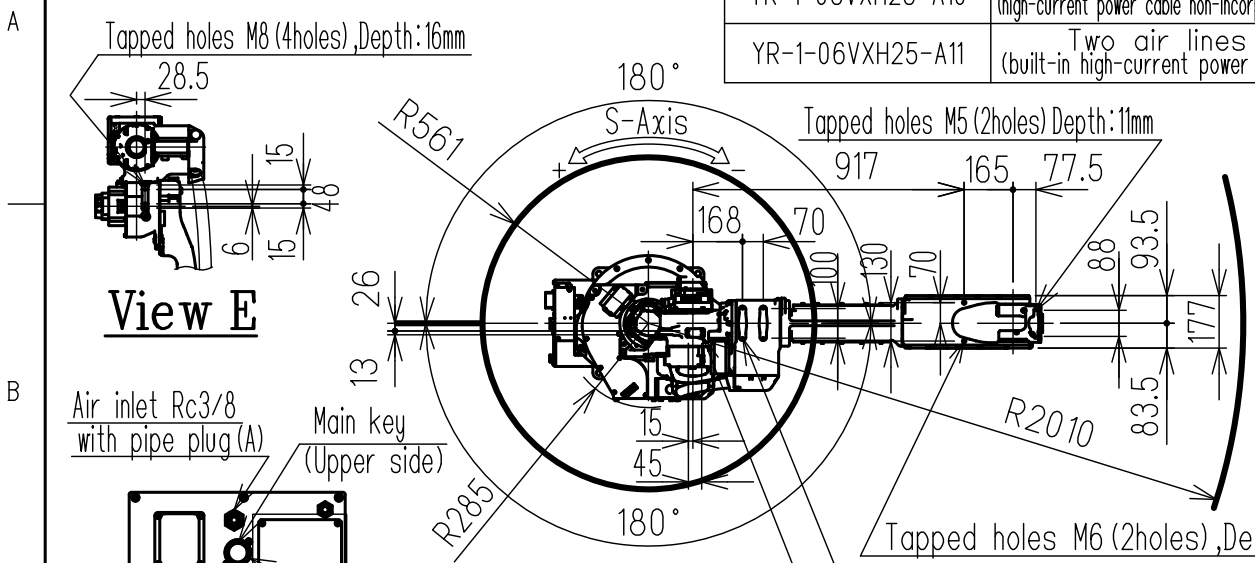


DWG.NO. HW1385610

Type	Note
YR-1-06VXH25-A10	STANDARD: One air line (high-current power cable non-incorporation)
YR-1-06VXH25-A11	Two air lines (built-in high-current power cable)



- Pins Used**
- 1 (0.2mm<sup>2</sup>)
  - 2 (0.2mm<sup>2</sup>)
  - 3 (0.2mm<sup>2</sup>)
  - 4 (0.2mm<sup>2</sup>)
  - 5 (0.2mm<sup>2</sup>)
  - 6 (0.2mm<sup>2</sup>)
  - 7 (+24V (1A))
  - 8 shock sensor (in)
  - 9 (0.2mm<sup>2</sup>)
  - 10 (0.2mm<sup>2</sup>)
  - 11 (0.75mm<sup>2</sup>)
  - 12 (0.75mm<sup>2</sup>)
  - 13 (1.25mm<sup>2</sup>)
  - 14 (1.25mm<sup>2</sup>)
  - 15 (1.25mm<sup>2</sup>)
  - 16 (1.25mm<sup>2</sup>)

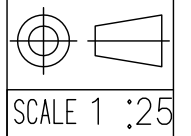
**Detail of Internal User Wiring Connector**  
 \*Refer to connection diagram for a reserved cable (DWG No. HW0383235) when using the connector: No.7 or No.8.

Item	Model	MOTOMAN-GP25-12
Configuration	Vertically articulated	
Degree of Freedom	6	
Payload	Wrist	12kg
	On U-arm (※1)	9kg
Repeatability (※2)	±0.08mm	
Range of Motion	S-Axis	-180° ~ +180°
	L-Axis	-105° ~ +155°
	U-Axis	-86° ~ +160°
	R-Axis	-200° ~ +200°
	B-Axis	-150° ~ +150°
Max Speed	T-Axis	-455° ~ +455°
	S-Axis	3.67rad/s, 210° /s
	L-Axis	3.67rad/s, 210° /s
	U-Axis	3.84rad/s, 220° /s
	R-Axis	7.59rad/s, 435° /s
Allowable Moment	B-Axis	7.59rad/s, 435° /s
	T-Axis	12.2rad/s, 700° /s
	R-Axis	22N·m (2.2kgf·m)
Allowable Inertia (GD <sup>2</sup> /4)	B-Axis	22N·m (2.2kgf·m)
	T-Axis	9.8N·m (1.0kgf·m)
	R-Axis	0.65kg·m <sup>2</sup>
Approx. Robot mass	260kg	
Protected structure	Body: IP54 Wrist: IP67	
Mounting method (※3)	Floor-mounted, Wall-mounted, Tilt-mounted, Ceiling-mounted	
Ambient Conditions	Temperature	0 ~ 45°C
	Humidity	20 ~ 80%RH (Non-condensing)
	Vibration	4.9m/s <sup>2</sup> (0.5G) or less
	Altitude	1000m or less
Power Requirements	Controller	2.0KVA YRC1000
	Others	• Free from explosive or corrosive gas and liquid. • Free from dust, soot, oil, or water. • Free from electrical noise. • Free from strong magnetic fields.

Notes: ※1 Load on the U-arm will vary depending on the load weight of the wrist part.  
 ※2 Repeatability is conformed to ISO 9283.  
 ※3 When the manipulator is installed on a slope or a wall, the motion of S-axis will be limited.  
 ※4 The manipulator is in the home position.  
 Units: mm

**Note:**  
 1. All rights reserved.  
 2. Please note that the data is subject to be deleted without advance notice.  
 3. No warranty is given in relation to the data including the specification.  
 4. We are not responsible for any damages or loss caused by the use of the data.

**FOR STUDY PURPOSE ONLY**



**YASKAWA**  
 株式会社 安川電機

Reference Drawing  
 TITLE MOTOMAN-GP25-12  
 DIMENSION DIAGRAM

DRWN DATE Jul. 5.' 17  
 DWG. NO. HW1385610

SIZE A3