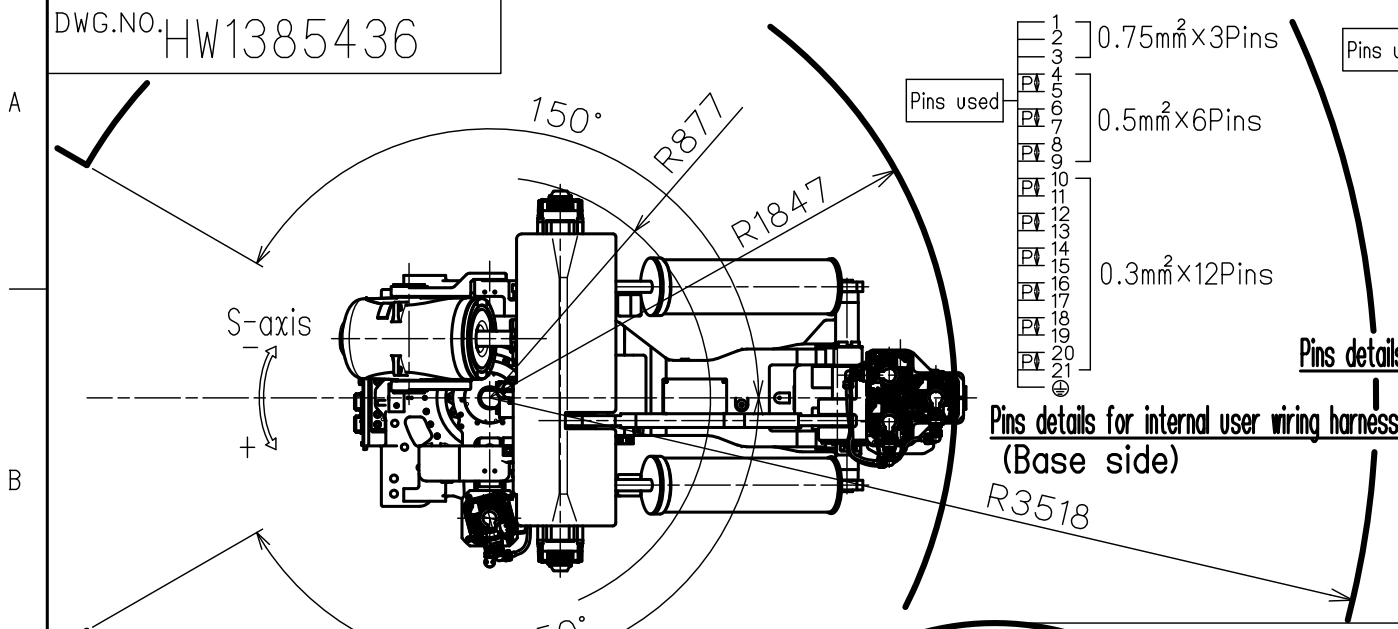
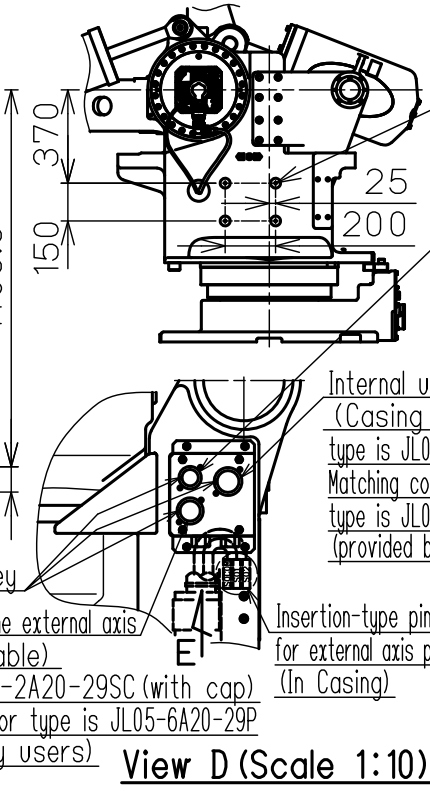
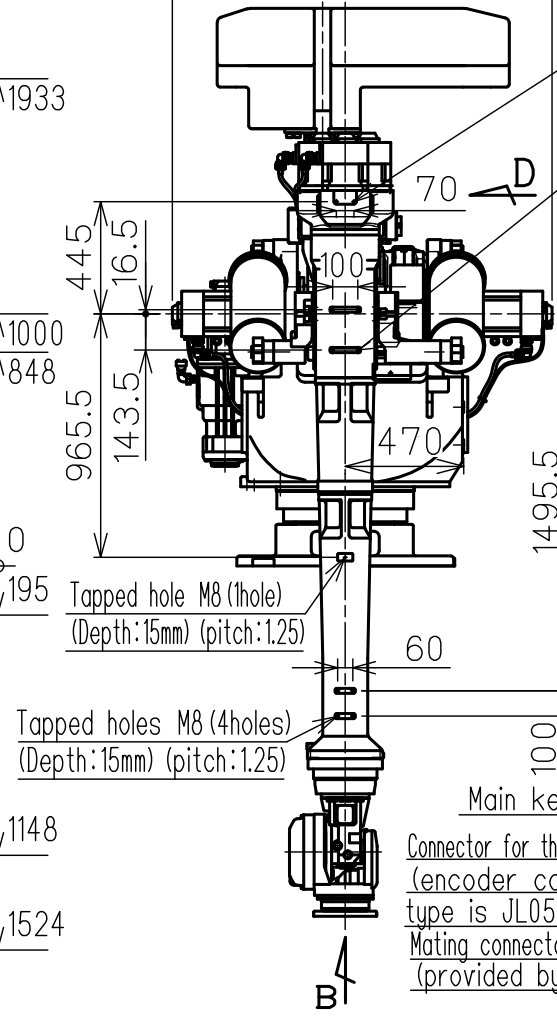
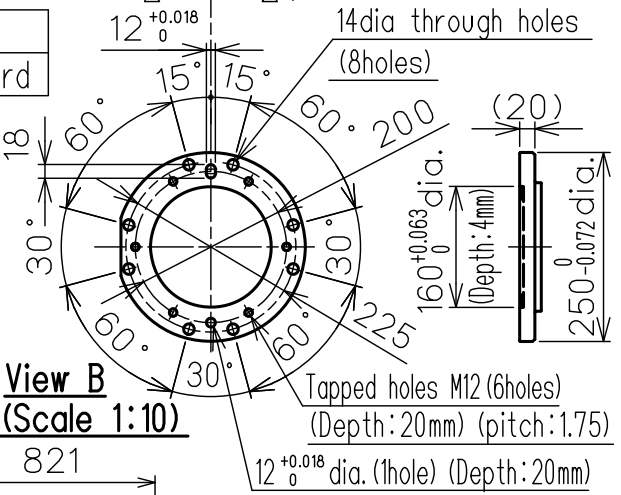
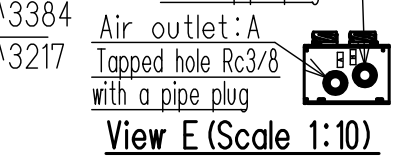
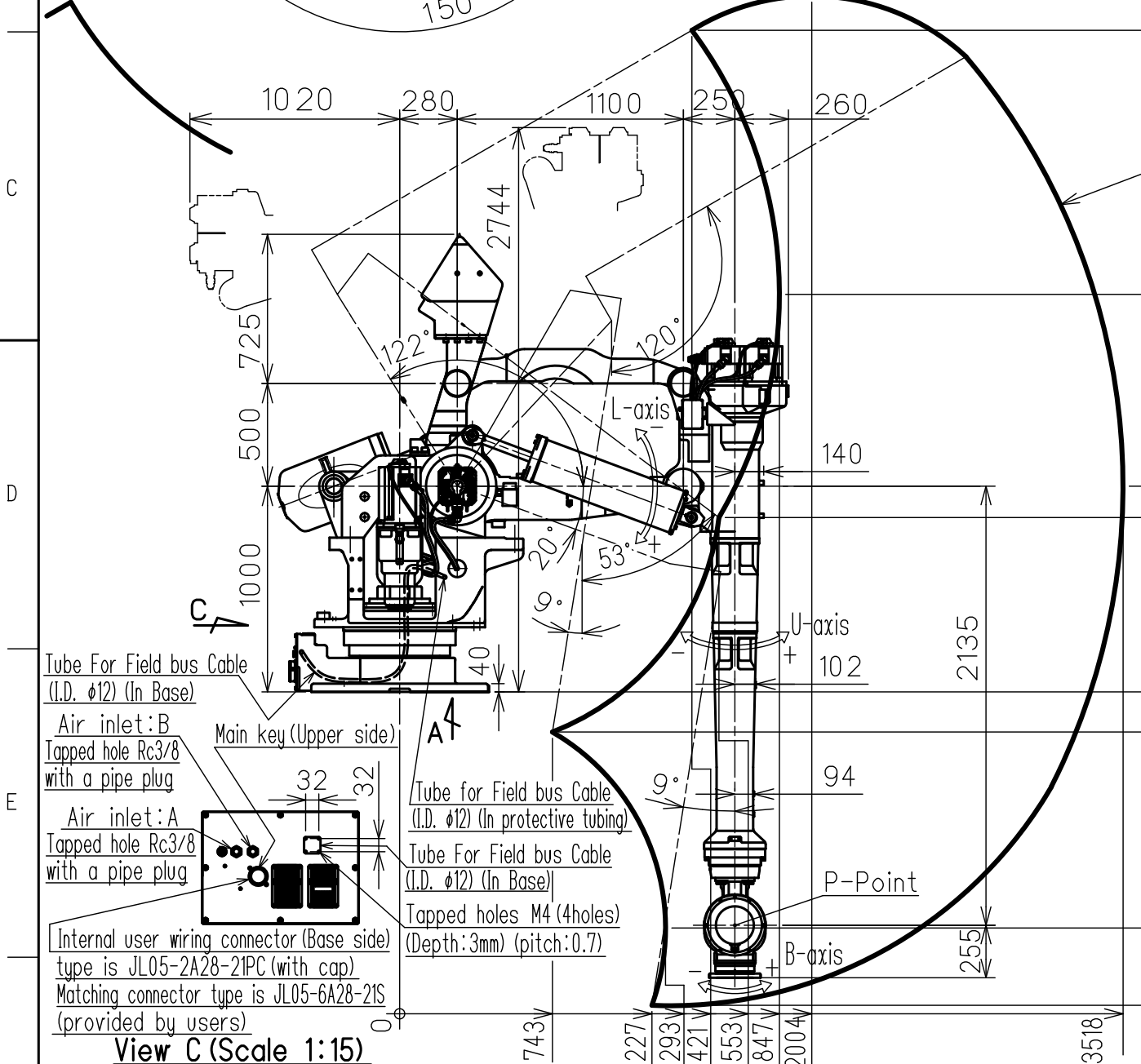


DWG.NO. HW1385436



Type	Note
YR-1-06VR400-A00	Standard

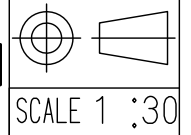


Item	Model	MOTOMAN-GP400R
Configuration	Vertically articulated	
Degree of Freedom	6	
Payload	Wrist	400 kg
	On U-arm	10 kg
Repeatability (※1)	±0.5 mm	
Range of Motion	S-Axis (Turning)	-150° - +150°
	L-Axis (Lower Arm)	-122° - +20°
	U-Axis (Upper Arm)	-9° - +120°
	R-Axis (Roll)	-360° - +360°
	B-Axis (Pitch/Yaw)	-120° - +120°
Max Speed	S-Axis	1.40rad/s (80°/s)
	L-Axis	1.40rad/s (80°/s)
	U-Axis	1.40rad/s (80°/s)
Allowable Moment	R-Axis	1960N·m (200kgf·m)
	B-Axis	1960N·m (200kgf·m)
	T-Axis	833N·m (85kgf·m)
Allowable Inertia (GD ² /4)	R-Axis	150 kg·m ²
	B-Axis	150 kg·m ²
	T-Axis	50 kg·m ²
Approx. Robot mass	3560 kg	
Protected structure	Body:IP30 Wrist:IP67	
Mounting method	Shelf-mounted	
Ambient Conditions	Temperature	0 to +45°C
	Humidity	20 to 80%RH (Non-condensing)
	Vibration	4.9m/s ² (0.5G) or less
	Altitude	1000m or less
	Others	<ul style="list-style-type: none"> Free from explosive or corrosive gas and liquid. Free from dust,soot,oil,or water. Free from electrical noise. Free from strong magnetic fields.
Power Requirements	7.0KVA	
Controller	YRC1000	

※1 Repeatability is conformed to ISO 9283.
 ※2 The manipulator is in the home position.
 Units:mm

Note:
 1.All rights reserved.
 2.Please note that the data is subject to be deleted without advance notice.
 3.No warranty is given in relation to the data including the specification.
 4.We are not responsible for any damages or loss caused by the use of the data.

FOR STUDY PURPOSE ONLY



YASKAWA
 株式会社安川電機

Reference Drawing

TITLE MOTOMAN-GP400R
 DIMENSION DIAGRAM

DRWN DATE Oct.18.'17
 DWG.NO. HW1385436

SIZE A3