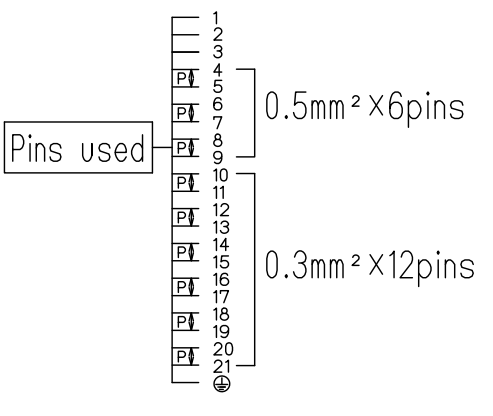
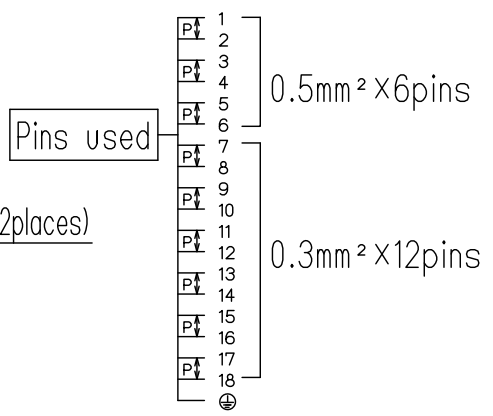
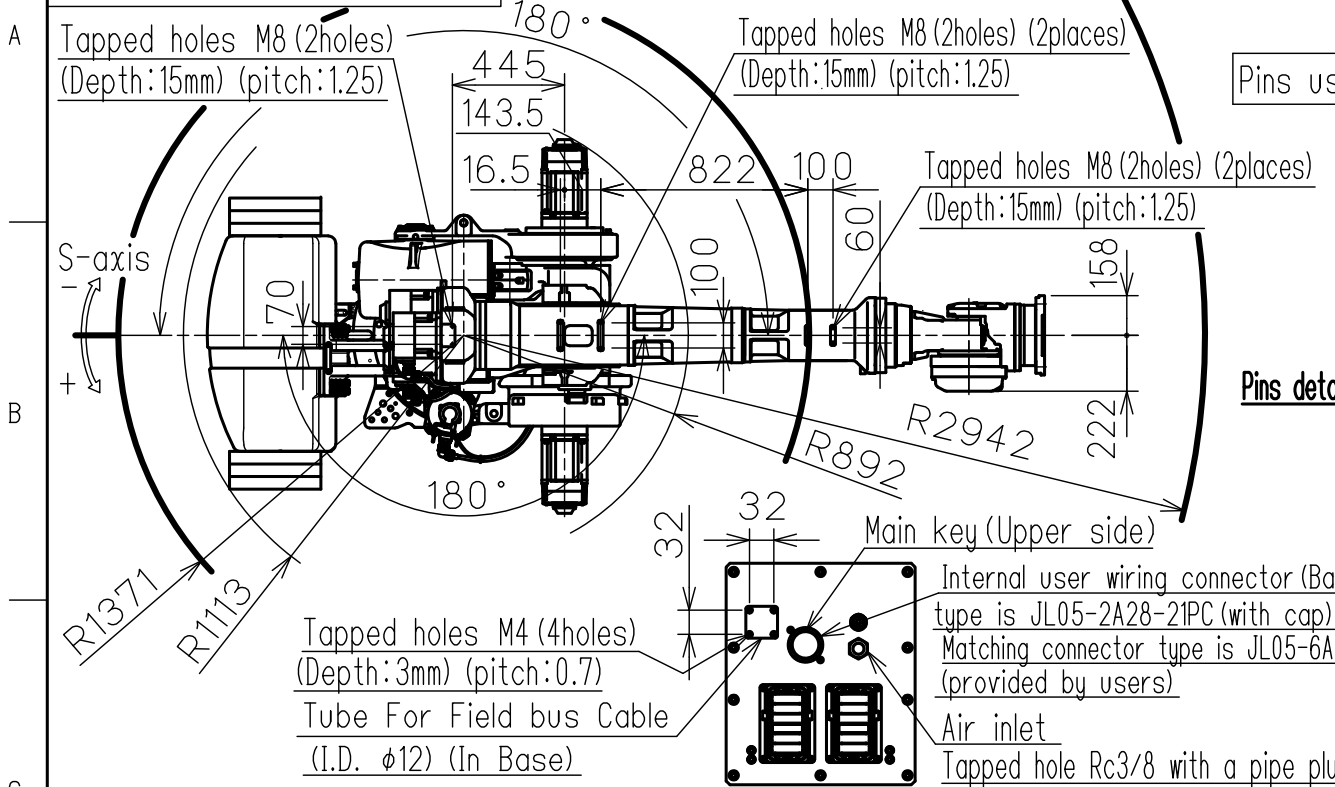
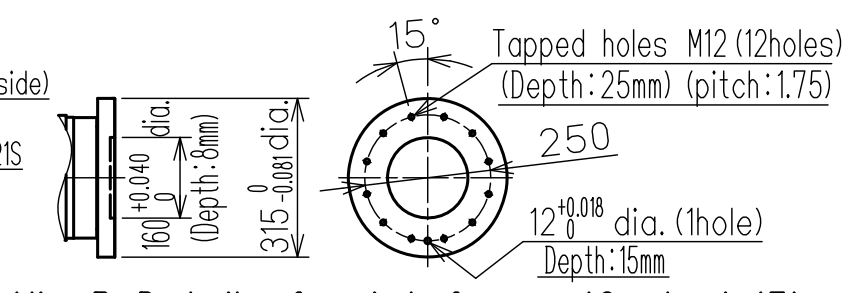


DWG.NO. HW1385406

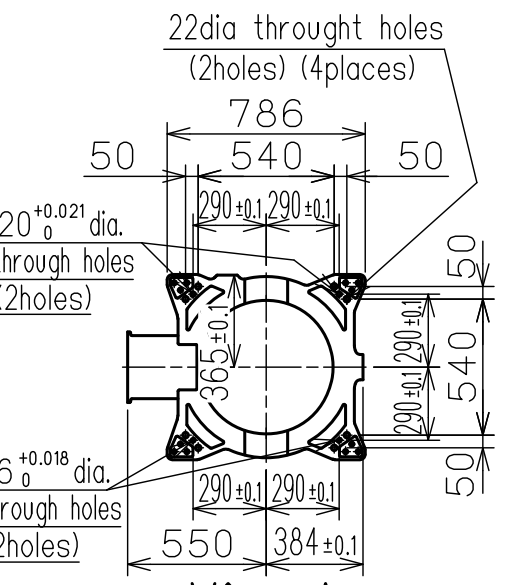
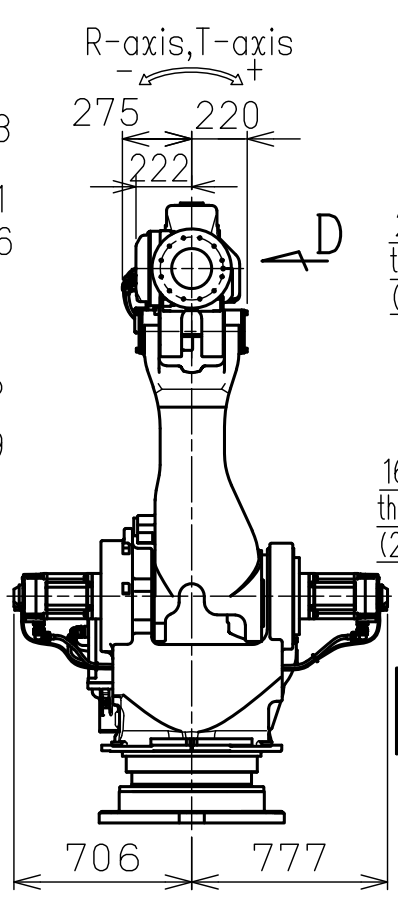
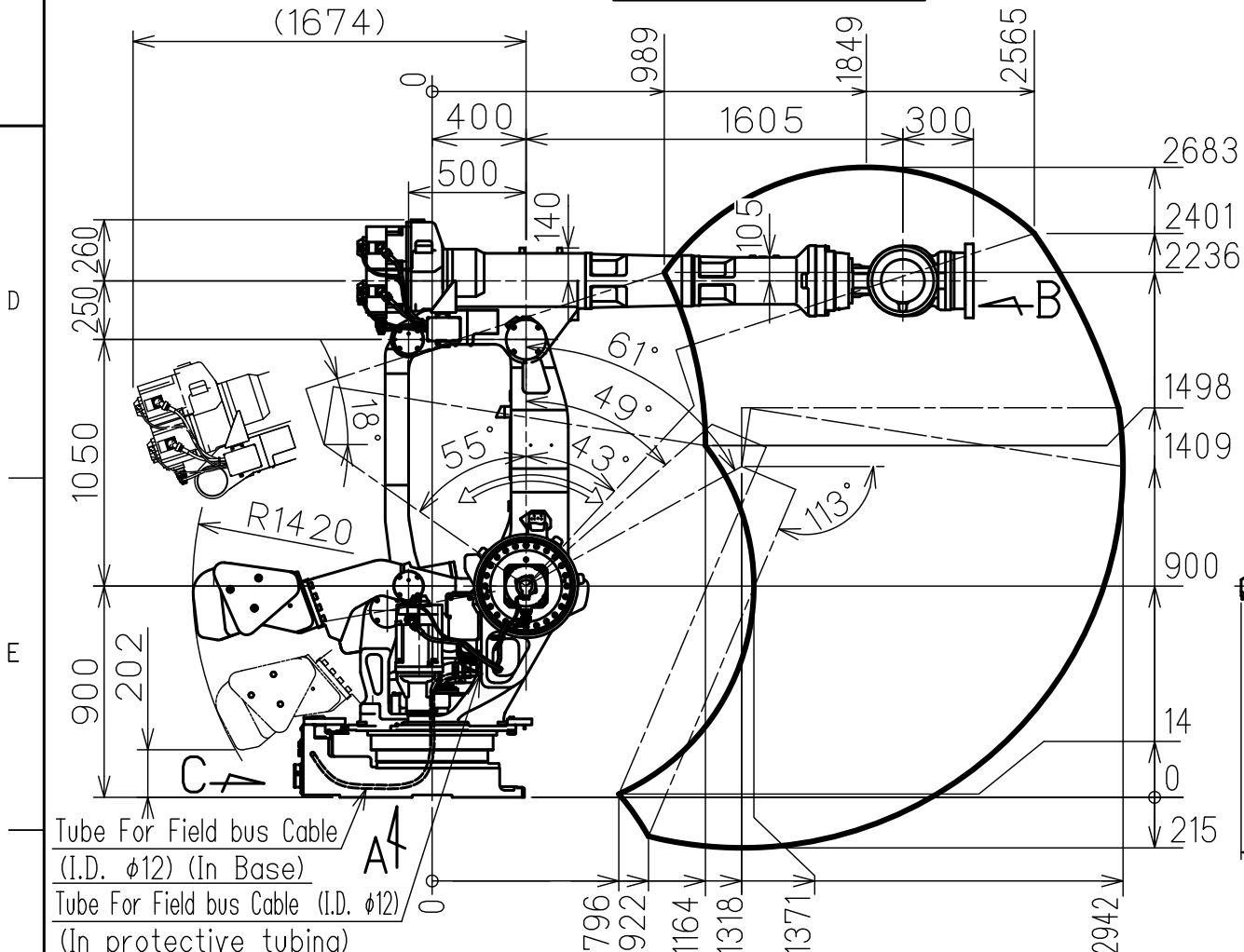


Pins details for internal user wiring harness (Casing side)

Pins details for internal user wiring harness (Base side)

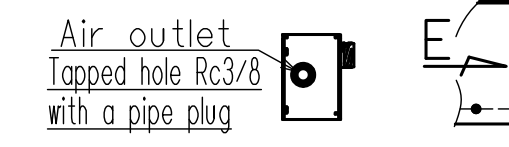


View B Detail of wrist frange (Scale 1:15)

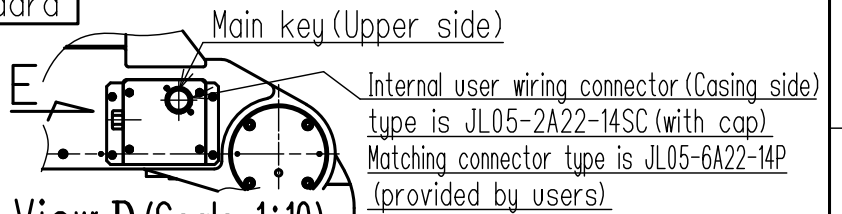


View A

| Type | Note |
|------------------|----------|
| YR-1-06VX600-A00 | Standard |



View E (Scale 1:10)



View D (Scale 1:10)

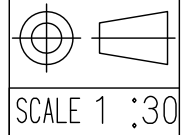
| Item | Model | MOTOMAN-GP600 |
|--|------------------------|---|
| Configuration | Vertically articulated | |
| Degree of Freedom | 6 | |
| Payload | Wrist | 600kg |
| | On U-arm | 50kg |
| Repeatability (※1) | ±0.3 mm | |
| Range of Motion | S-Axis (Turning) | -180° - +180° |
| | L-Axis (Lower Arm) | -55° - +61° |
| | U-Axis (Upper Arm) | -113° - +18° |
| | R-Axis (Roll) | -360° - +360° |
| | B-Axis (Pitch/Yaw) | -115° - +115° |
| | T-Axis (Twist) | -360° - +360° |
| Max Speed | S-Axis | 1.43rad/s (82° /s) |
| | L-Axis | 1.43rad/s (82° /s) |
| | U-Axis | 1.43rad/s (82° /s) |
| | R-Axis | 1.40rad/s (80° /s) |
| | B-Axis | 1.40rad/s (80° /s) |
| Allowable Moment | R-Axis | 3430N·m (350kgf·m) |
| | B-Axis | 3430N·m (350kgf·m) |
| | T-Axis | 1764N·m (180kgf·m) |
| Allowable Inertia (GD ² /4) | R-Axis | 520kg·m ² |
| | B-Axis | 520kg·m ² |
| | T-Axis | 350kg·m ² |
| Approx. Robot mass | 3035 kg | |
| Protected structure | Body:IP30 Wrist:IP67 | |
| Mounting method | Floor-mounted | |
| Ambient Conditions | Temperature | 0 to +45°C |
| | Humidity | 20 to 80%RH (Non-condensing) |
| | Vibration | 4.9m/s ² (0.5G) or less |
| | Altitude | 1000m or less |
| | Others | <ul style="list-style-type: none"> •Free from explosive or corrosive gas and liquid. •Free from dust,soot,oil,or water. •Free from electrical noise. •Free from strong magnetic fields. |
| Power Requirements | 7.0KVA | |
| Controller | YRC1000 | |

※1 Repeatability is conformed to ISO 9283.
 ※2 The manipulator is in the home position.

Units: mm

Note:
 1.All rights reserved.
 2.Please note that the data is subject to be deleted without advance notice.
 3.No warranty is given in relation to the data including the specification.
 4.We are not responsible for any damages or loss caused by the use of the data.

FOR STUDY PURPOSE ONLY



YASKAWA
 株式会社 安川電機

Reference Drawing

TITLE MOTOMAN-GP600
 DIMENSION DIAGRAM

DRWN DATE Oct.03.'17

DWG.NO. HW1385406

HW1385406

SIZE A3