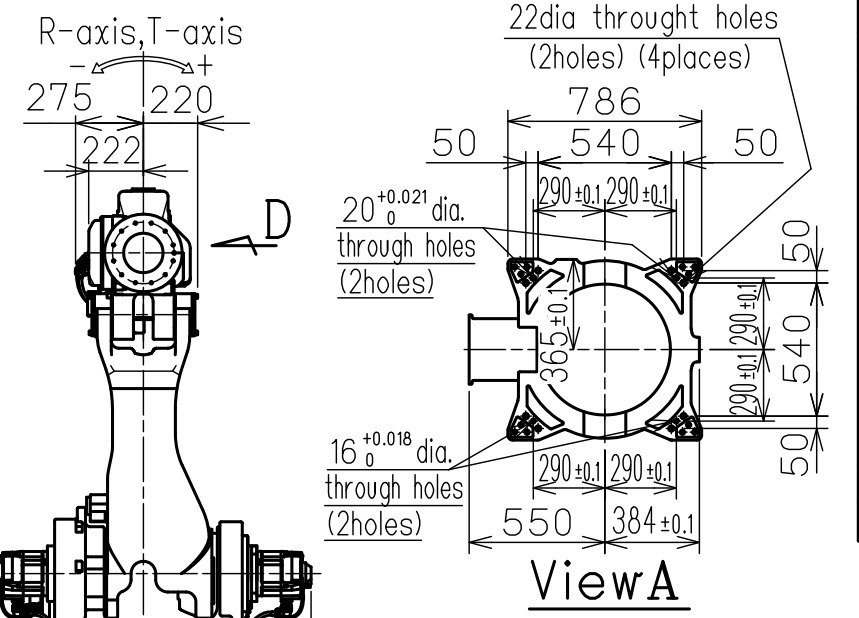
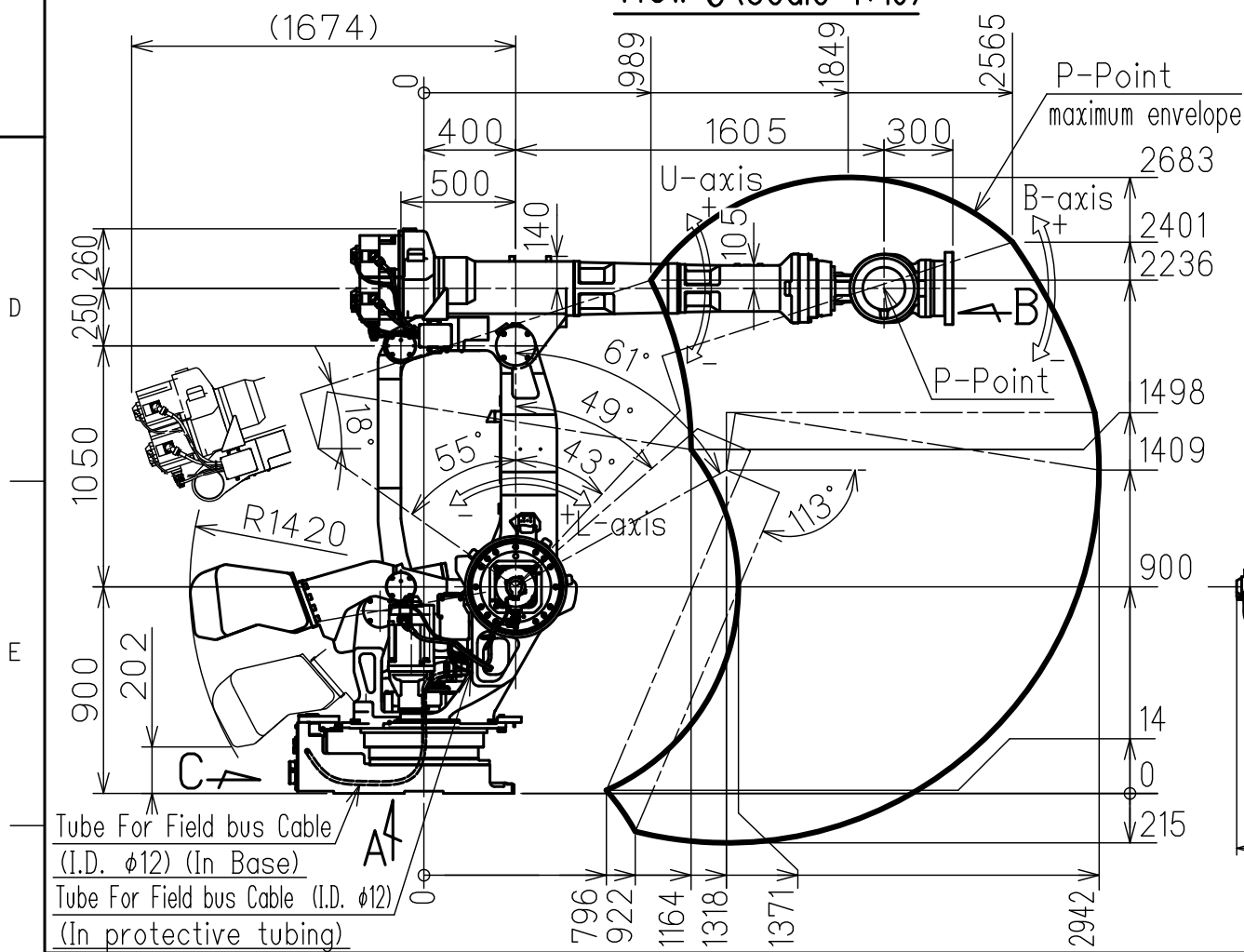
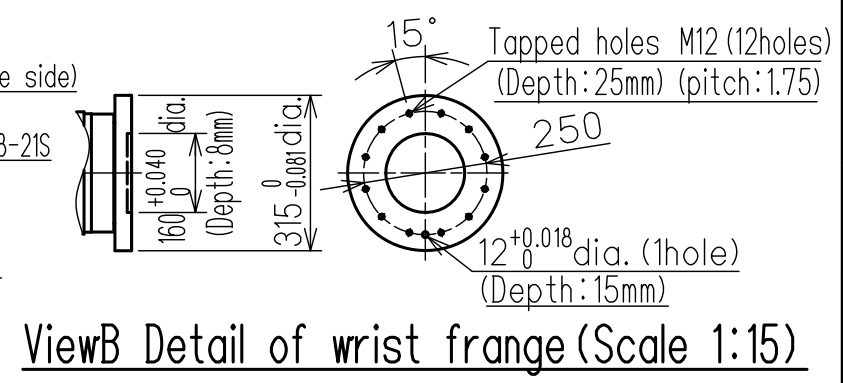
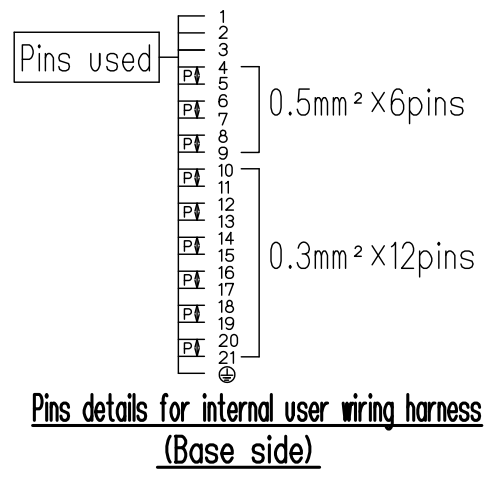
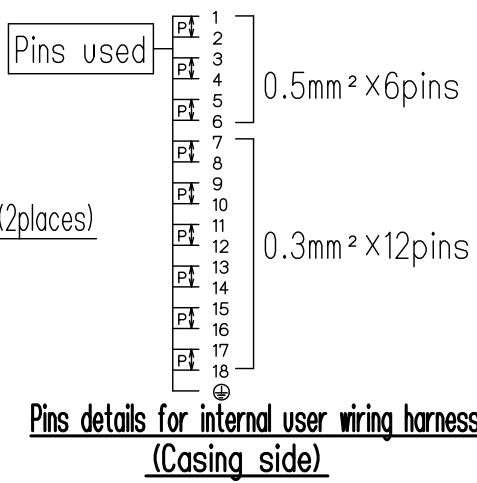
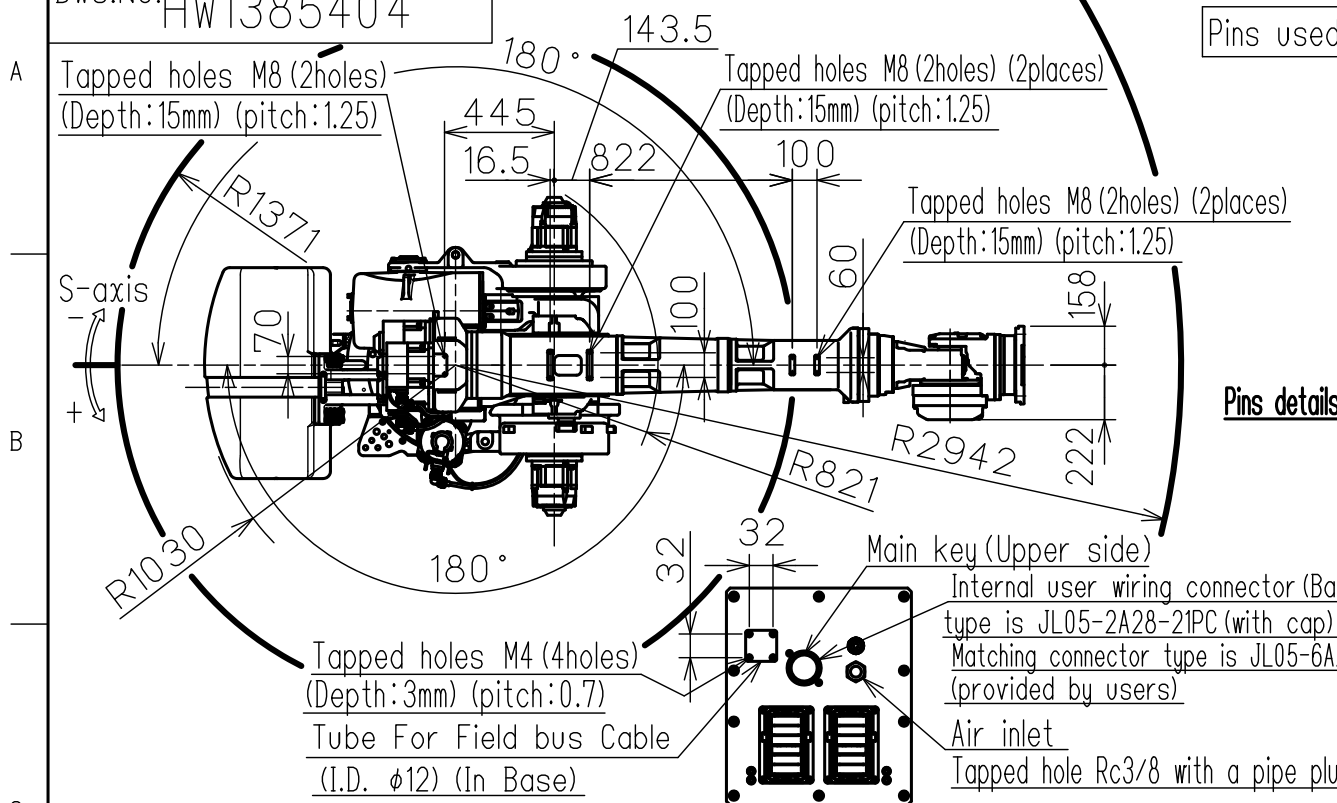
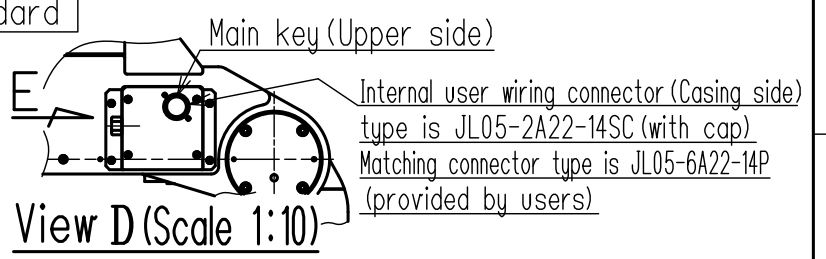
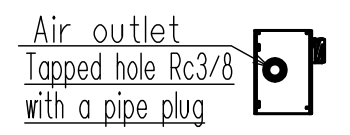


DWG.NO. HW1385404



Type	Note
YR-1-06VX400-A00	Standard

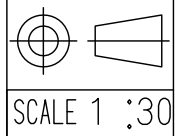


Item	Model	MOTOMAN-GP400
Configuration		Vertically articulated
Degree of Freedom		6
Payload	Wrist	400kg
	On U-arm	50kg
Repeatability (※1)		±0.3 mm
Range of Motion	S-Axis (Turning)	-180° - +180°
	L-Axis (Lower Arm)	-55° - +61°
	U-Axis (Upper Arm)	-113° - +18°
	R-Axis (Roll)	-360° - +360°
	B-Axis (Pitch/Yaw)	-115° - +115°
T-Axis (Twist)	-360° - +360°	
Max Speed	S-Axis	1.78rad/s (102° /s)
	L-Axis	1.69rad/s (97° /s)
	U-Axis	1.69rad/s (97° /s)
	R-Axis	1.40rad/s (80° /s)
	B-Axis	1.40rad/s (80° /s)
T-Axis	3.00rad/s (172° /s)	
Allowable Moment	R-Axis	2989N·m (305kgf·m)
	B-Axis	2989N·m (305kgf·m)
	T-Axis	1343N·m (137kgf·m)
Allowable Inertia (GD ² /4)	R-Axis	500kg·m ²
	B-Axis	500kg·m ²
	T-Axis	315kg·m ²
Approx. Robot mass		2840 kg
Protected structure		Body:IP30 Wrist:IP67
Mounting method		Floor-mounted
Ambient Conditions	Temperature	0 to +45°C
	Humidity	20 to 80%RH (Non-condensing)
	Vibration	4.9m/s ² (0.5G) or less
	Altitude	1000m or less
Others		<ul style="list-style-type: none"> Free from explosive or corrosive gas and liquid. Free from dust,soot,oil,or water. Free from electrical noise. Free from strong magnetic fields.
Power Requirements		7.0KVA
Controller		YRC1000

※1 Repeatability is conformed to ISO 9283.
 ※2 The manipulator is in the home position.
 Units: mm

Note:
 1.All rights reserved.
 2.Please note that the data is subject to be deleted without advance notice.
 3.No warranty is given in relation to the data including the specification.
 4.We are not responsible for any damages or loss caused by the use of the data.

FOR STUDY PURPOSE ONLY



YASKAWA
 株式会社 安川電機

Reference Drawing

TITLE MOTOMAN-GP400
 DIMENSION DIAGRAM

DRWN DATE Oct.03.'17
 DWG.NO. HW1385404

SIZE A3