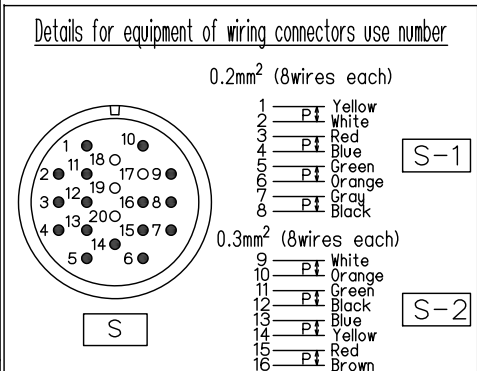
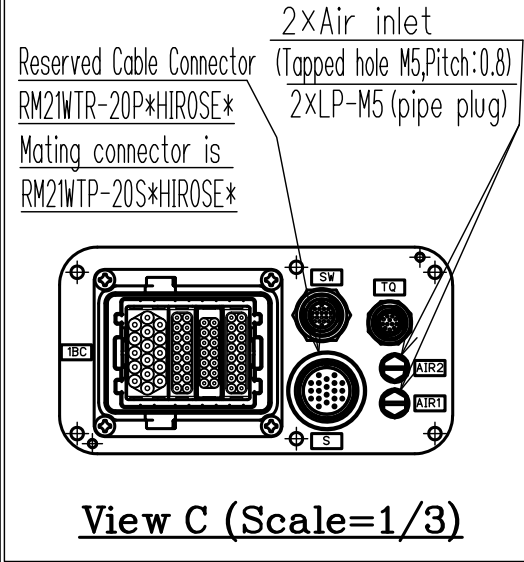
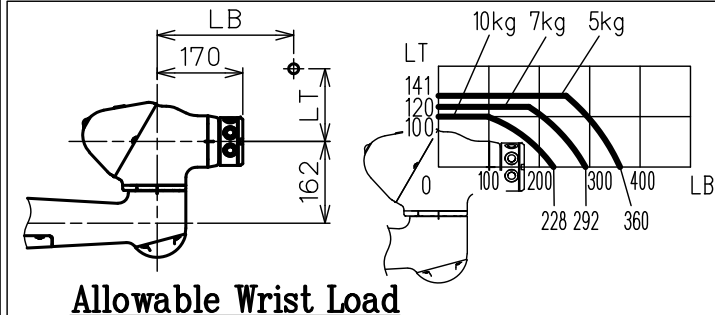
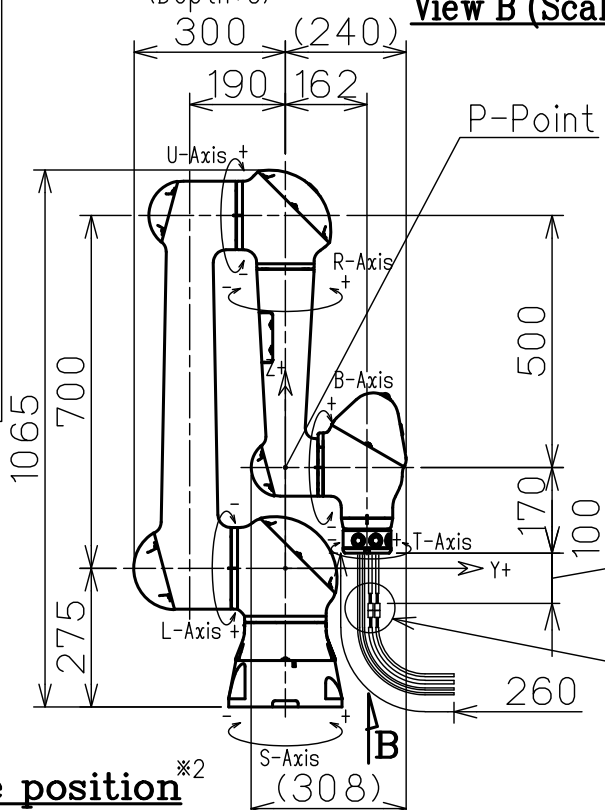
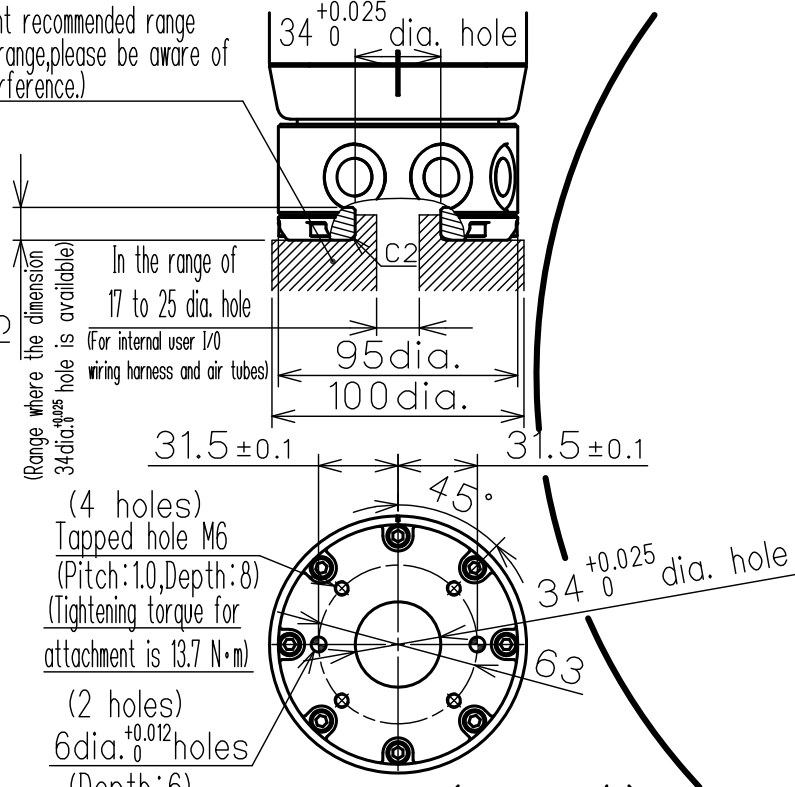


DWG.NO. HW1385798

Attachment recommended range
(Out of range, please be aware of
the interference.)



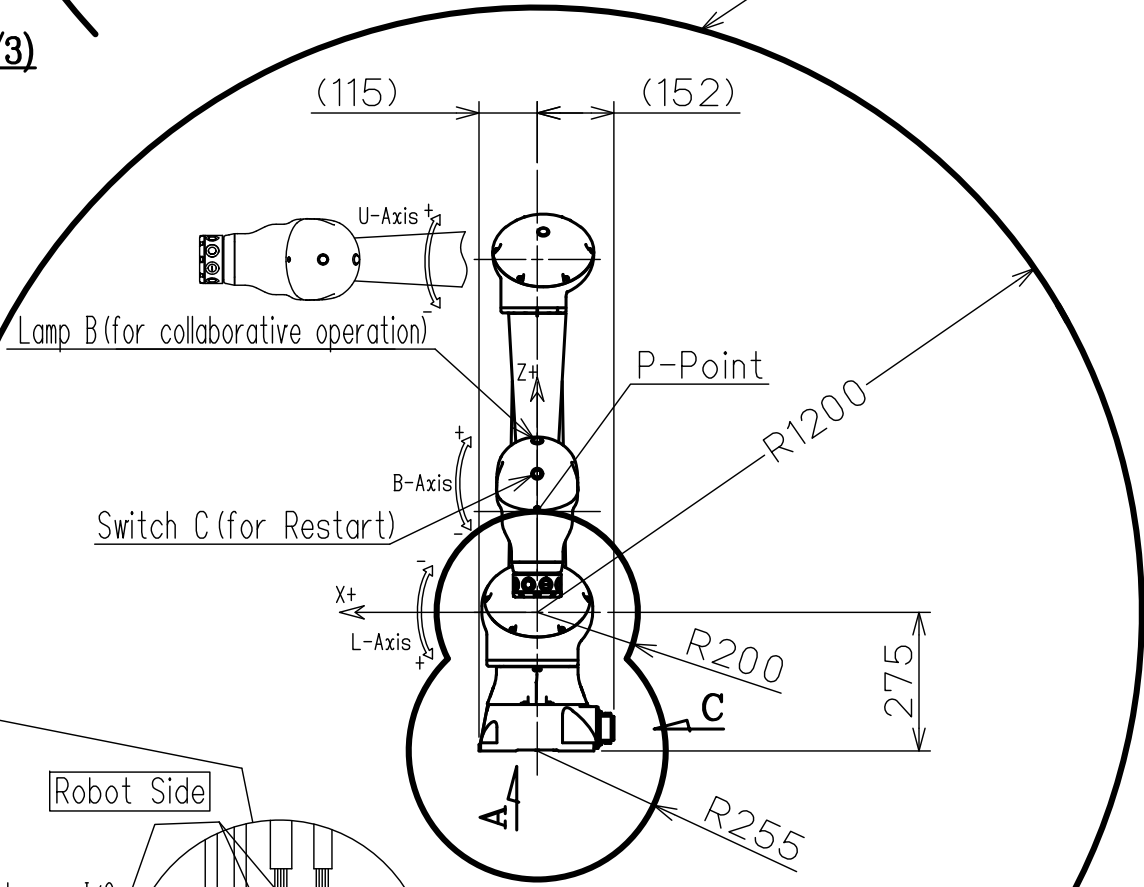
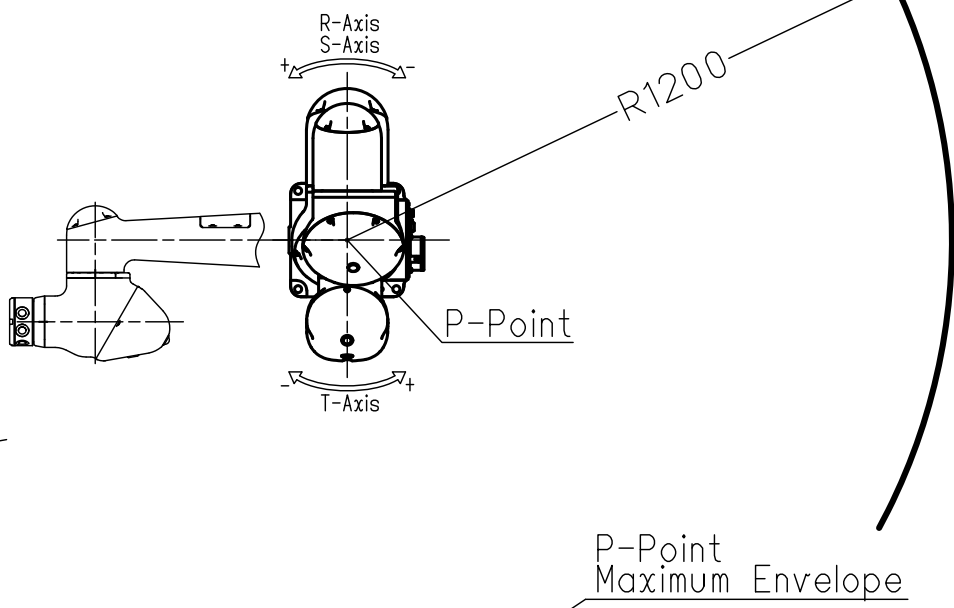
The figure above shows the state viewed
from the fitting side of the manipulator side
of the connector.
(connection side of the mating connector)



View B (Scale=1/3)

Home position ^{※2}

Allowable Wrist Load



2x Connectors for internal user I/O
wiring harness: 51216-0800*MOLEX*

AIR1 (Red)

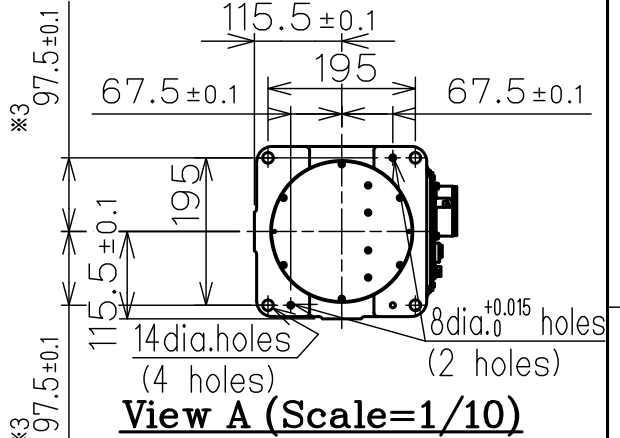
AIR2 (Blue)

2x Connectors for internal user I/O
wiring harness: 51227-0800*MOLEX*

2x Air Tubes
(Outside dia. 4mm)

Type	Specification
YR-1-06VXHC10-A10	With Direct Teach Button

※3. Tolerance shall be applied only
for 8 dia. ^{+0.015} holes.

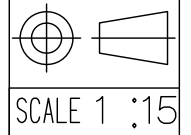


Item	Model	Collaborative Robot MOTOMAN-HC10DT
Configuration		Vertically Articulated
Degree of Freedom		6
Payload		10kg
Repeatability ^{※1}		±0.1mm
Range of motion	S-Axis (Turning)	-180° ~ +180°
	L-Axis (Lower Arm)	-180° ~ +180°
	U-Axis (Upper Arm)	-5° ~ +355°
	R-Axis (Roll)	-180° ~ +180°
	B-Axis (Pitch/Yaw)	-180° ~ +180°
Maximum speed	S-Axis	2.27rad/s, 130°/s
	L-Axis	2.27rad/s, 130°/s
	U-Axis	3.14rad/s, 180°/s
	R-Axis	3.14rad/s, 180°/s
	T-Axis	4.36rad/s, 250°/s
Allowable Moment	R-Axis	27.4N·m (2.8kgf·m)
	B-Axis	27.4N·m (2.8kgf·m)
	T-Axis	9.8N·m (1.0kgf·m)
Allowable Inertia (GD ² /4)	R-Axis	0.78 kg·m ²
	B-Axis	0.78 kg·m ²
	T-Axis	0.1 kg·m ²
Approx. Robot mass		48kg
Protected structure		All axes: IP20
Mounting method		Floor-mounted, Wall-mounted, Tilt-mounted, Ceiling-mounted
Ambient Conditions	Temperature	0 to 40 °C
	Humidity	20 to 80%RH (Non-Condensing)
	Vibration	Less than 4.9m/s ² (0.5G)
	Altitude	1000m or less
	Others	•Free from explosive or corrosive gas and liquid. •Free from dust, oil, of water. •Free from electrical noise. •Free from Strong magnetic fields.
Power Requirements		1.0kVA
Controller		YRC1000/YRC1000micro

SI units are used in this table.
However, gravitational unit is used in ().
※1 Conformed to ISO9283
※2 The manipulator is in the home position.

Note:
1. All rights reserved.
2. Please note that the data is subject to be
deleted without advance notice.
3. No warranty is given in relation to the data
including the specification.
4. We are not responsible for any damages
or loss caused by the use of the data.

FOR STUDY PURPOSE ONLY



YASKAWA
株式会社 安川電機

Reference Drawing

TITLE MOTOMAN-HC10DT
DIMENSION DIAGRAM

DRWN DATE Jan. 12, 2018
DWG.NO. HW1385798

SIZE A3