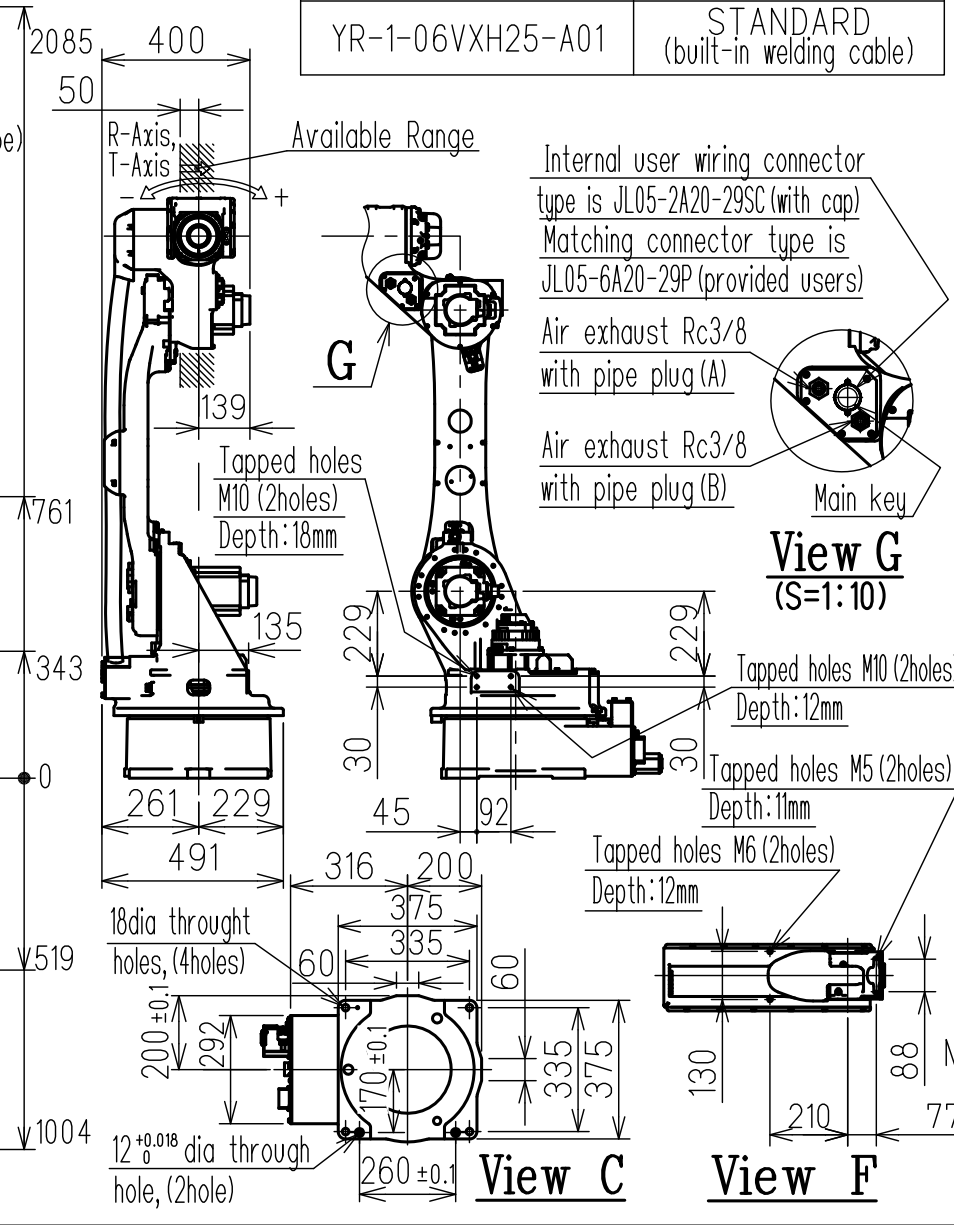
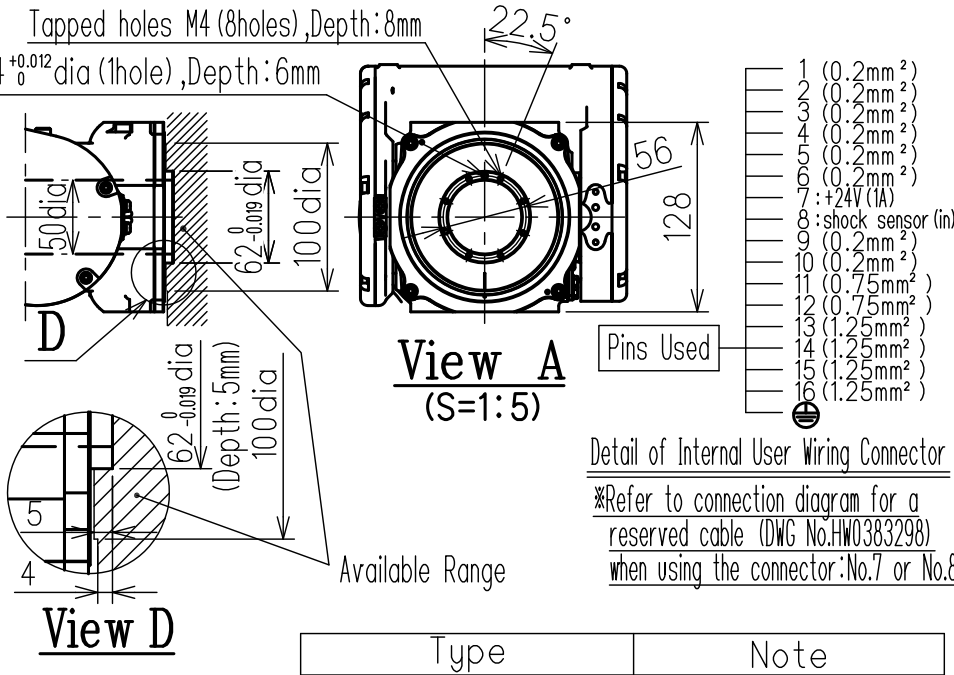
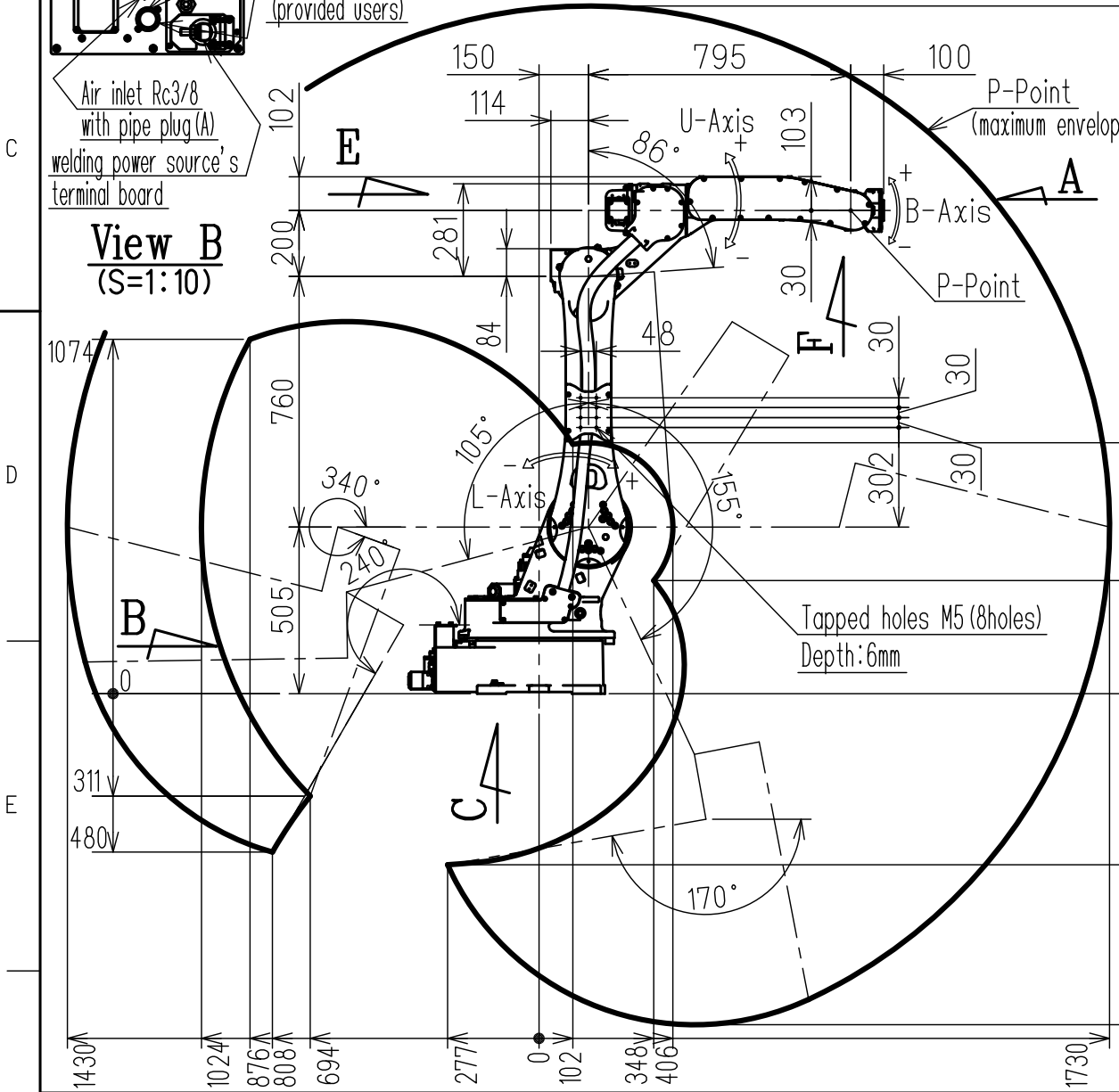
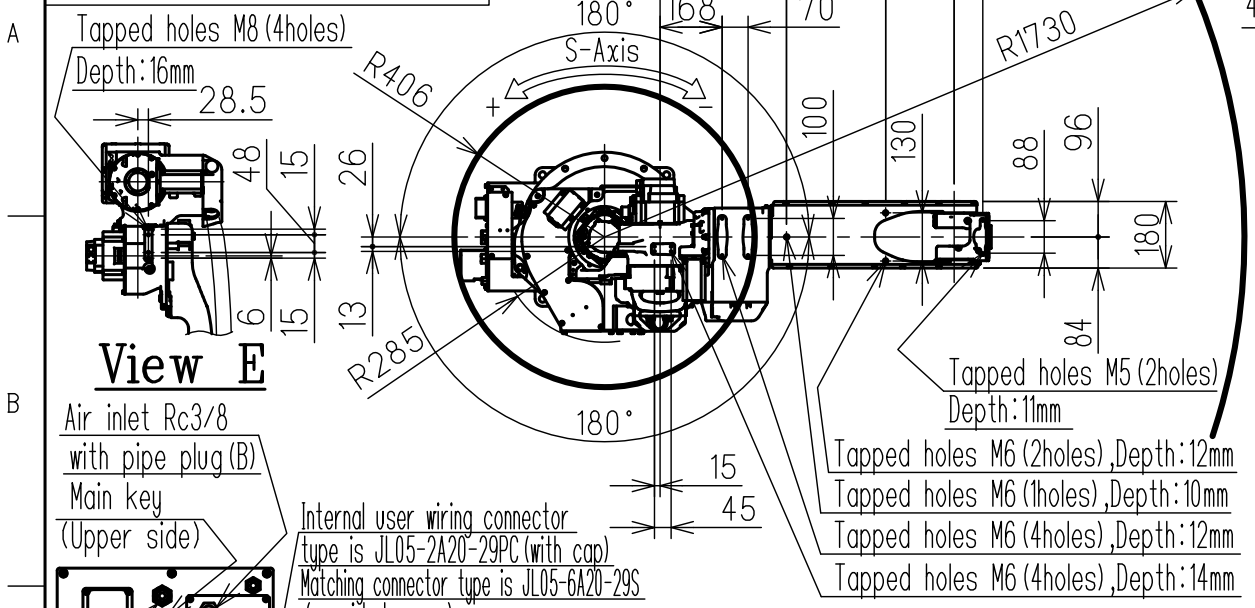


DWG.NO. HW1385563

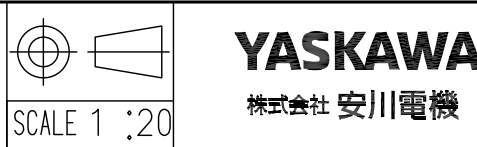


Item	Model	MOTOMAN-AR1730
Configuration	Articulated Robot	
Degree of Freedom	6	
Payload	Wrist	25kg
	On U-arm (*1)	12kg
Repeatability (*2)	±0.06mm	
Range of Motion	S-Axis	-180° ~ +180°
	L-Axis	-105° ~ +155°
	U-Axis	-86° ~ +160°
	R-Axis	-200° ~ +200°
	B-Axis	-150° ~ +150°
	T-Axis	-455° ~ +455°
Max Speed	S-Axis	3.67rad/s, 210° /s
	L-Axis	3.67rad/s, 210° /s
	U-Axis	4.63rad/s, 265° /s
	R-Axis	7.33rad/s, 420° /s
	B-Axis	7.33rad/s, 420° /s
Allowable Moment	R-Axis	52N·m (5.3kgf·m)
	B-Axis	52N·m (5.3kgf·m)
	T-Axis	32N·m (3.3kgf·m)
Allowable Inertia (GD ² /4)	R-Axis	2.3kg·m ²
	B-Axis	2.3kg·m ²
	T-Axis	1.2kg·m ²
Approx. Robot mass	250kg	
Protected structure	Body:IP54 Wrist:IP67	
Mounting method (*3)	Floor-mounted, Wall-mounted, Tilt-mounted, Ceiling-mounted	
Ambient Conditions	Temperature	0~45°C
	Humidity	20~80%RH (Non-condensing)
	Vibration	4.9m/s ² (0.5G) or less
	Altitude	1000m or less
Others	<ul style="list-style-type: none"> Free from explosive or corrosive gas and liquid. Free from dust, soot, oil, or water. Free from electrical noise. Free from strong magnetic fields. 	
Power Requirements	2.0KVA	
Controller	YRC1000	

Notes: *1 Load on the U-arm will vary depending on the load weight of the wrist part.
*2 Repeatability is conformed to ISO 9283.
*3 When the manipulator is installed on a slope or a wall, the motion of S-axis will be limited.
*4 The manipulator is in the home position. Units: mm

Note:
1.All rights reserved.
2.Please note that the data is subject to be deleted without advance notice.
3.No warranty is given in relation to the data including the specification.
4.We are not responsible for any damages or loss caused by the use of the data.

FOR STUDY PURPOSE ONLY



Reference Drawing

TITLE MOTOMAN-AR1730
DIMENSION DIAGRAM

DRWN DATE May.12.'17
DWG.NO. HW1385563

SIZE A3