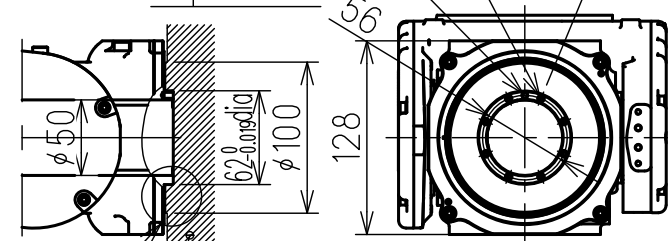


DWG.NO. HW1385596

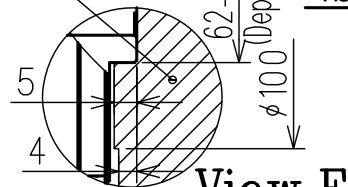
Tapped holes M4 (8holes)
Depth: 8mm, Pitch: 0.7mm

4^{+0.012} dia (1hole)
Depth: 6mm



View A
(Scale=1:5)

Available Range



View E

Available Range



View D

Air outlet Rc3/8 with pipe plug (A)

Air outlet Rc3/8 with pipe plug (B)

Main key (Upper side)

Internal user wiring connector type is JL05-2A20-29SC (with cap)

Matching connector type is JL05-6A20-29P (provided users)

Tapped holes M8 (4holes)
Depth: 18mm, Pitch: 1.25mm

welding power source's terminal board

Main key (Upper side)

Air inlet Rc3/8 with pipe plug (A)

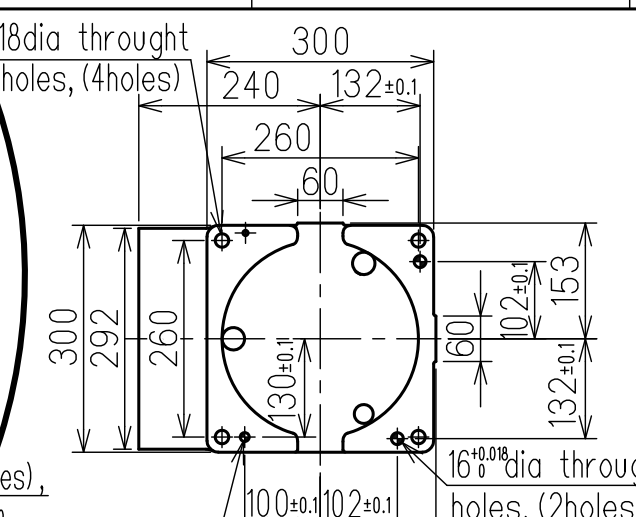
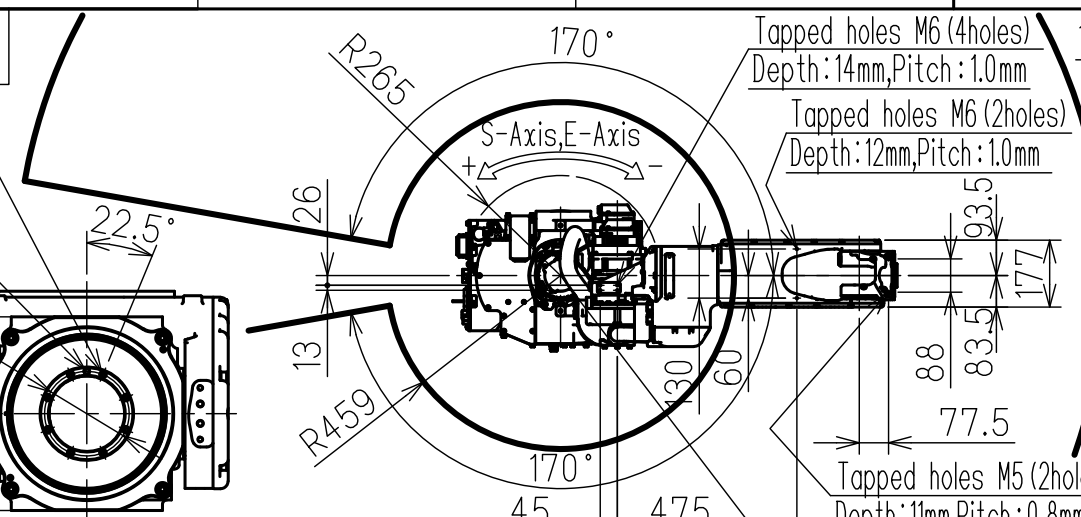
Air inlet Rc3/8 with pipe plug (B)

welding power source's terminal board

Internal user wiring connector type is JL05-2A20-29PC (with cap)

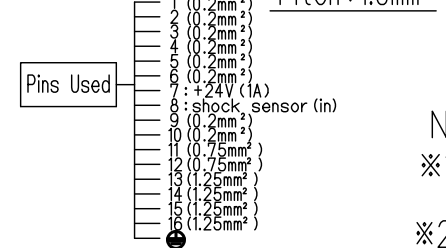
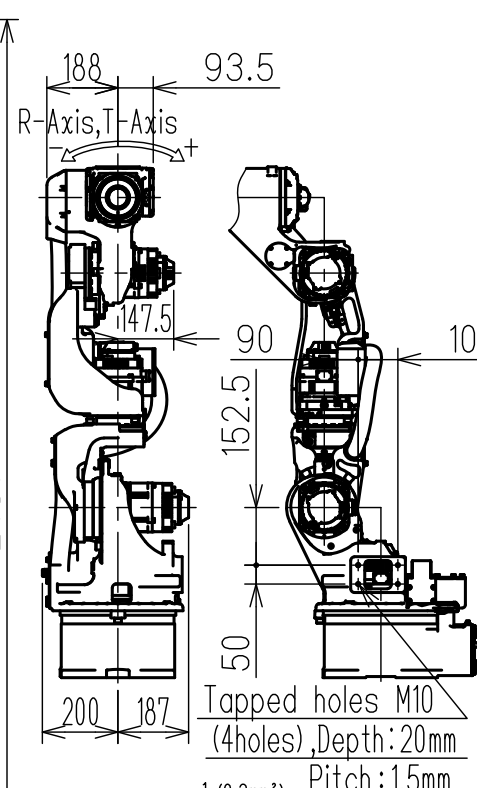
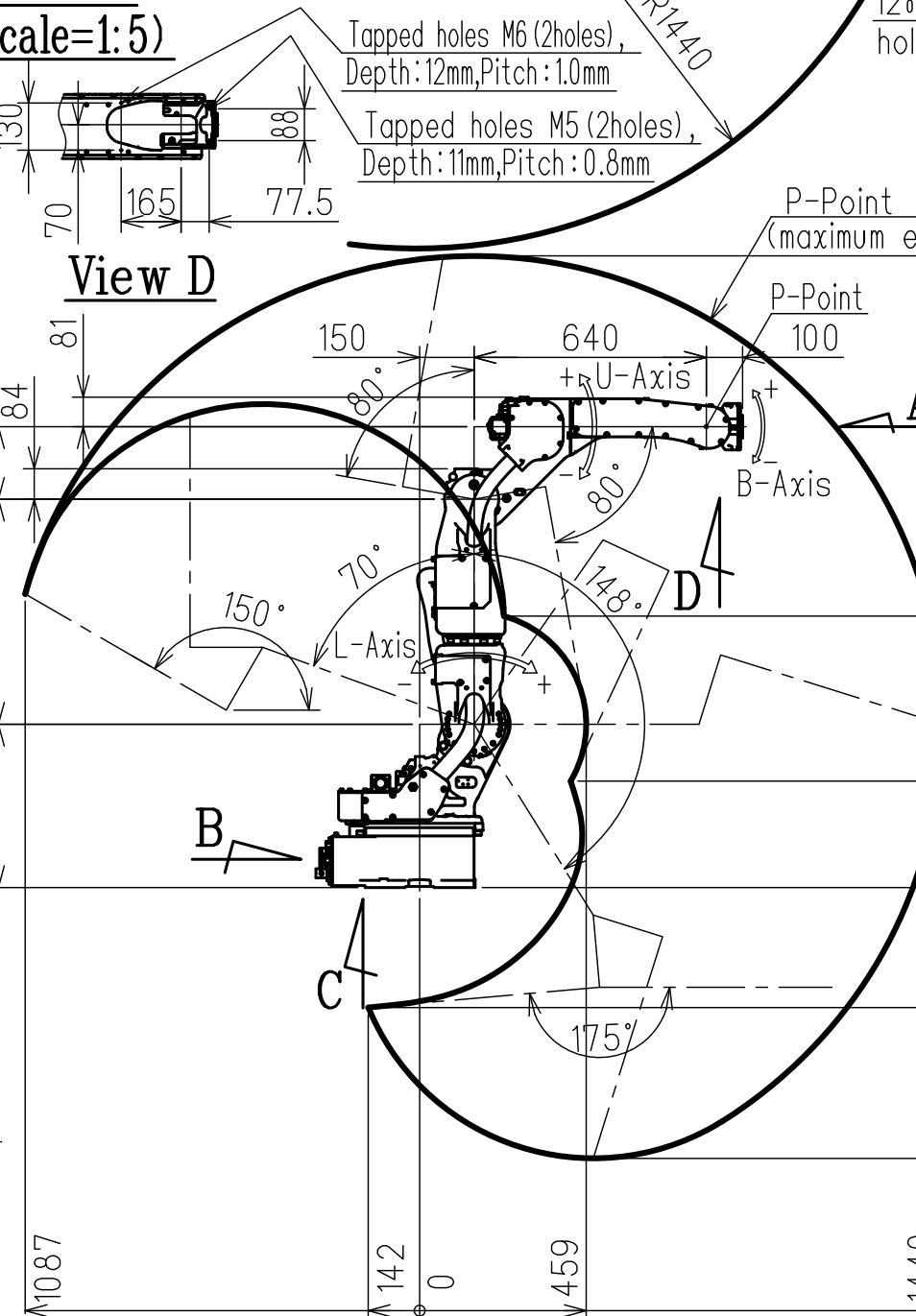
Matching connector type is JL05-6A20-29S (provided users)

View B



View C (Scale=1:10)

Type	Note
YR-1-07VXHE6-A00	STANDARD (built-in welding cable)



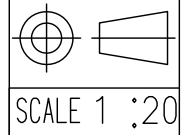
Detail of Internal User Wiring Connector
*Refer to connection diagram for a reserved cable (DWG No.HW0383298) when using the connector: No.7 or No.8.

Item	Model	MOTOMAN-AR1440E
Configuration		Articulated Robot
Degree of Freedom		7
Payload	Wrist	6kg
	On U-arm (*1)	10kg
Repeatability (*2)		±0.08mm
Range of Motion	S-Axis	-170° - +170°
	L-Axis	-70° - +148°
	E-Axis	-90° - +90°
	U-Axis	-80° - +80°
	R-Axis	-200° - +200°
	B-Axis	-150° - +150°
Max Speed	T-Axis	-455° - +455°
	S-Axis	4.53rad/s, 260° /s
	L-Axis	4.01rad/s, 230° /s
	E-Axis	4.53rad/s, 260° /s
	U-Axis	4.53rad/s, 260° /s
	R-Axis	8.20rad/s, 470° /s
Allowable Moment	B-Axis	8.20rad/s, 470° /s
	T-Axis	12.2rad/s, 700° /s
	R-Axis	12.5N·m (1.28kgf·m)
Allowable Inertia (GD ² /4)	B-Axis	12.5N·m (1.28kgf·m)
	T-Axis	6.0N·m (0.61kgf·m)
	R-Axis	0.40kg·m ²
Approx. Robot mass		190kg
Protected structure		Body:IP54 Wrist:IP67
Mounting method		Floor-mounted
Ambient Conditions	Temperature	0 to 45°C
	Humidity	20 to 80%RH (Non-condensing)
	Vibration	4.9m/s (0.5G) or less
	Altitude	1000m or less
Others		•Free from explosive or corrosive gas and liquid. •Free from dust,soot,oil,or water. •Free from electrical noise. •Free from strong magnetic fields.
Power Requirements		1.5KVA
Controller		YRC1000

Notes:
*1 Load on the U-arm will vary depending on the load weight of the wrist part.
*2 Repeatability is conformed to ISO 9283.
*3 The manipulator is in the home position.
Units:mm

Note:
1.All rights reserved.
2.Please note that the data is subject to be deleted without advance notice.
3.No warranty is given in relation to the data including the specification.
4.We are not responsible for any damages or loss caused by the use of the data.

FOR STUDY PURPOSE ONLY



YASKAWA
株式会社 安川電機

Reference Drawing

TITLE MOTOMAN-AR1440E
DIMENSION DIAGRAM

DRWN DATE Jun. 26. '18
DWG.NO. HW1385596

SIZE A3