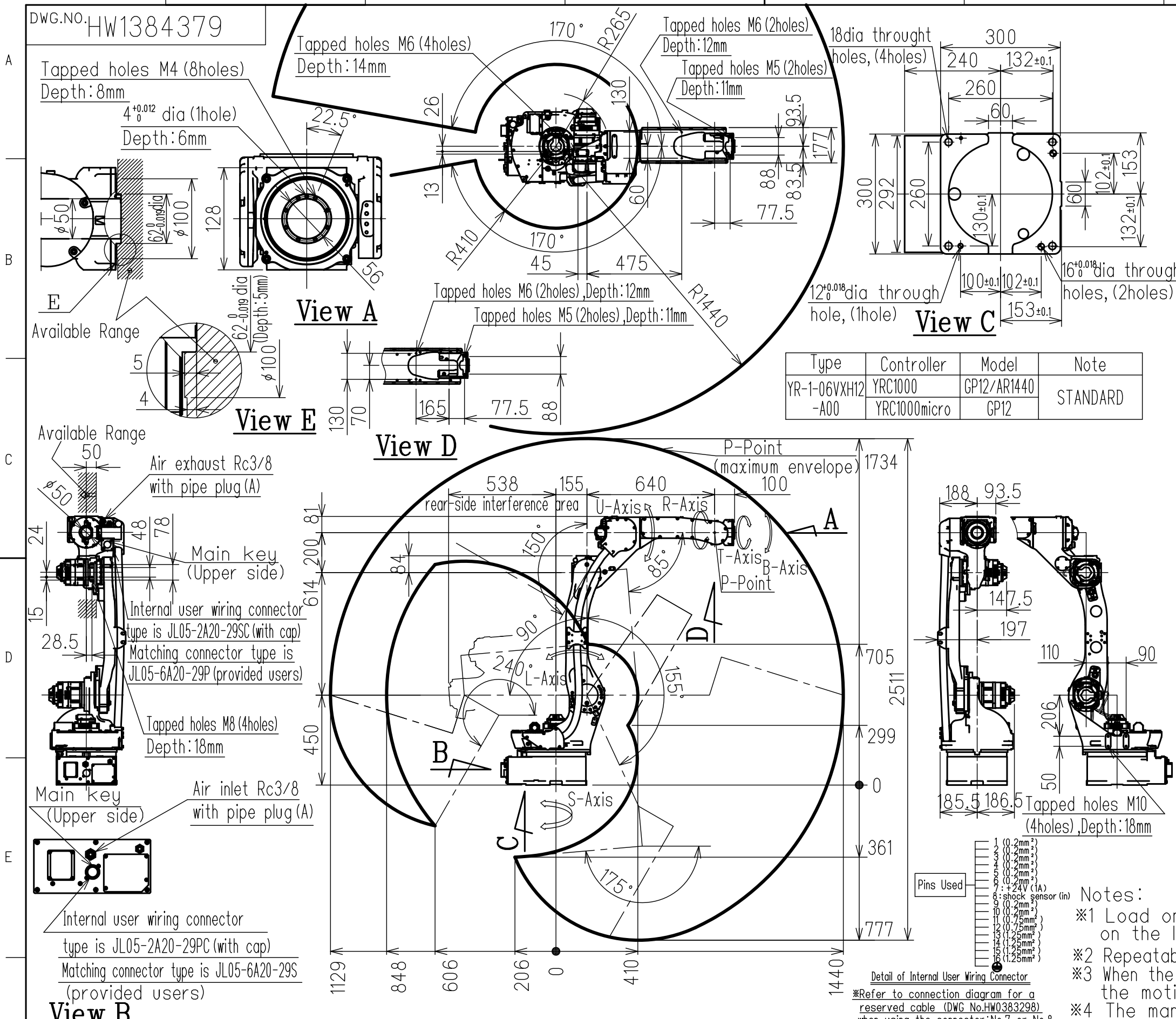
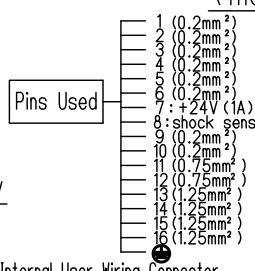


DWG.NO. HW1384379



Type	Controller	Model	Note
YR-1-06VXH2-A00	YRC1000	GP12/AR1440	STANDARD
	YRC1000micro	GP12	

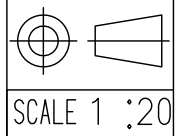
Item	Model	MOTOMAN-GP12/AR1440
Configuration	Articulated Robot	
Degree of Freedom	6	
Payload	Wrist	12kg
	On U-arm (*1)	10kg
Repeatability (*2)	±0.06mm	
Range of Motion	S-Axis	-170° ~ +170°
	L-Axis	-90° ~ +155°
	U-Axis	-85° ~ +150°
	R-Axis	-200° ~ +200°
	B-Axis	-150° ~ +150°
	T-Axis	-455° ~ +455°
Max Speed	S-Axis	4.53rad/s, 260° /s
	L-Axis	4.01rad/s, 230° /s
	U-Axis	4.53rad/s, 260° /s
	R-Axis	8.20rad/s, 470° /s
	B-Axis	8.20rad/s, 470° /s
	T-Axis	12.2rad/s, 700° /s
Allowable Moment	R-Axis	22N·m (2.2kgf·m)
	B-Axis	22N·m (2.2kgf·m)
	T-Axis	9.8N·m (1.0kgf·m)
Allowable Inertia (GD <sup>2</sup> /4)	R-Axis	0.65kg·m <sup>2</sup>
	B-Axis	0.65kg·m <sup>2</sup>
	T-Axis	0.17kg·m <sup>2</sup>
Approx, Robot mass	150kg	
Protected structure	Body: IP54 Wrist: IP67	
Mounting method (*3)	Floor-mounted, Wall-mounted, Tilt-mounted, Ceiling-mounted	
Ambient Conditions	Temperature	0~45°C
	Humidity	20~80%RH (Non-condensing)
	Vibration	4.9m/s <sup>2</sup> (0.5G) or less
	Altitude	1000m or less
Others	<ul style="list-style-type: none"> <li>Free from explosive or corrosive gas and liquid.</li> <li>Free from dust, soot, oil, or water.</li> <li>Free from electrical noise.</li> <li>Free from strong magnetic fields.</li> </ul>	
	Power Requirements	1.5KVA
Controller	YRC1000/YRC1000micro	



Notes:  
 \*1 Load on the U-arm will vary depending on the load weight of the wrist part.  
 \*2 Repeatability is conformed to ISO 9283.  
 \*3 When the manipulator is installed on a slope or a wall, the motion of S-axis will be limited.  
 \*4 The manipulator is in the home position. Units:mm

Note:  
 1.All rights reserved.  
 2.Please note that the data is subject to be deleted without advance notice.  
 3.No warranty is given in relation to the data including the specification.  
 4.We are not responsible for any damages or loss caused by the use of the data.

FOR STUDY PURPOSE ONLY



**YASKAWA**  
 株式会社 安川電機

Reference Drawing

TITLE MOTOMAN-GP12/AR1440  
 DIMENSION DIAGRAM

DRWN DATE Aug.18.'16  
 DWG.NO. HW1384379

SIZE A3